



ABOUT ALMANARA

Al Manara goals are to keep up with all new developments and expand every year in supplying new high-quality products and techniques, based on the market requirements.

Our mission is to establish lasting relationships with our customers by exceeding their expectations and gaining their trust through providing high quality products and exceptional performance by every member of our team.

Our aim is to always provide high quality services that exceed the expectations of our esteemed customers

ZHERMACK

PRODUCTS

ZHERMACK

PRODUCTS
MADE IN ITALY



IMPRESSION MATERIAL

ZETA PLUS KIT

- ZETA PLUS (PUTTY)
- ORAN WASH (LIGHT BODY)
- INDURENT GEL (CATALYST)
- THIXOFLEX M (CATALYST)



HYDRORISE KIT

- HYDRORISE PUTTY
- HYDRORISE LIGHT
- HYDRORISE IMPLANT
- HYDRORISE MONOPHASE



ELITE HD+ KIT

- ELITE HD+ PUTTY
- ELITE HD+ LIGHT





LABORATORY ALGINATE

HYDROGUM 5
TROPICALGIN
ORTHOPRINT

GINGIFAST RIGID
GINGIFAST ELASTIC

ELITE ROCK
COLORBITE D
ELITE CORD
OCCLUFAS ROCK
ACRYTEMP

EXTRA-FAST SETTING ALGINATE WITH A HOMOGENEOUS CONSISTENCY (45 SECONDS IN MOUTH)

CHROMATIC ALGINATE FOR VERSATILE USE.

EXTRA-FAST FOR ORTHODONTIC USE

ADDITION SILICONE FOR THE REPRODUCTION OF THE GINGIVA.

ADDITION SILICONE FOR FIXED PROSTHESIS MODELS.

EXTRA HARD STONE FOR MASTER MODELS IN FIXED PROSTHESIS APPLICATIONS

EXTRA RIGID, THERMOCHROMIC A-SILICONE WITH FAST SET.

FOR GINGIVAL DISPLACEMENT

A-SILICONES FOR BITE REGISTRATION

TEMPORARY RESTORATION



PREVEST DEN PRO

PRODUCTS

PREVEST DEN PRO

PRODUCTS | MADE IN INDIA

- 1 EUGENOL
- 2 CHLOR X
- 3 DOLO ENDOGEL
- 4 SPECTRA FRESH
- 5 ACTINO GEL ETCH
- 6 PLATINA HI-GLOSS
- 7 FORMACRESOL
- 8 CAMPHENOL
- 9 CARVENE
- 10 APACAL ART
- 11 HEMOSTAL
- 12 EDTA SOLUTION 100ML
- 13 CALPLUS
- 14 P F SEAL
- 15 FUSION FLO
- 16 ORAFIL G
- 17 ORAFIL PLUS
- 18 ALVOCURE
- 19 ZINC OXIDE POWDER
- 20 ENDOSEAL

- 1 EUGENOL
- 2 ANTIBACTERIAL IRRIGATION AND CLEANSING AGENT FOR ROOT CANAL
- 3 EDTA GEL FOR ROOT CANALS
- 4 PROPHYLAXIS PASTE
- 5 ETCHING GEL
- 6 COMPOSITE POLISHING PASTE
- 7 TRICRESOL FORMALDEHYDE SOLUTION
- 8 CAMPHORATED PARA CHLOROPHENOL SOLUTION
- 9 GUTTA PERCHA SOLVENT
- 10 PHOTO CURE PULP PROTECTANT AND LINER
- 11 GINGIVAL RETRACTION SOLUTION
- 12 %17 EDTA SOLUTION
- 13 CALCIUM HYDROXIDE PASTE WITH LODOFORM
- 14 LIGHT CURED PIT AND FISSURE SEALANT COMPOSITE
- 15 LIGHT CURED NANO HYBRID FLOWABLE COMPOSITE
- 16 TEMPORARY FILLING MATERIAL
- 17 TEMPORARY FILLING MATERIAL WITH SODIUM FLUORIDE
- 18 PENGHA LODOFORM PASTE
- 19 ZINC OXIDE POWDER
- 20 ROOT CANAL OBTURATION CEMENT



- 21 ZINCONOL
- 22 COPAL - F
- 23 FUSION I-SEAL
- 24 IODOFORM
- 25 NANOSEAL - S
- 26 MICRON SUPERIOR
- 27 CERAFILL RCS 2G
- 28 FLUOROTOP APF
- 29 MTA PLUS
- 30 REVEAL
- 31 ZICAL
- 32 HIFLEX WAX
- 33 CAL LC
- 34 CALCIGEL
- 35 CALCIUM HYDROXIDE
- 36 SHIELD ACTIV
- 37 A.C.E
- 38 FUSION CORE DC FLO
- 39 EPOSEAL
- 40 GINGIVA SHIELD VLC

- INTERMEDIATE RESTORATIVE MATERIAL (IRM)
- COPAL CAVITY VARNISH WITH FLOURIDE
- LIGHT CURING GLASS LONOMER COMPOSITE CEMENT
- IODOFORM 20G
- COLD FLOWABLE POLYDIMETHYLSILOXANE BASED ROOT CANAL SEALER WITH MICRO S
- AESTHETIC FINE PARTICLE GLASS LONOMER RESTORATIVE MATERIAL
- BIOCERAMIC ROOT CANAL FILLING AND SEALING MATERIAL
- TOPICAL FLUORIDE ACIDULATED PHOSPHATE FLUORIDE %1.23 FLUORIDE LON
- VITAL PULP THERAPY & ROOT TREATMENT MATERIAL
- CARIES INDICATOR
- ZOE ROOT CANAL SEALER(AUTOMIX / MANUAL MIX CARTRIDGE)
- MODELLING WAX FOR PROSTHETICS
- LIGHT-CURED RADIOPAQUE CALCIUM HYDROXIDE PASTE
- ALL PURPOSE CALCIUM HYDROXIDE PASTE
- CALCIUM HYDROXIDE POWDER
- DENTIN DESENSITIZER
- CERAMIC REPAIR KIT
- FLOWABLE, DUAL CURING, NANO-TECH CORE BUILD-UP COMPOSITE
- ROOT CANAL SEALER
- LIGHT CURING GINGIVAL RESIN BARRIER, BLUE



COLTENE

PRODUCTS

COLTENE

PRODUCTS

MADE IN SWITZERLAND

KIT

- 1 COLTOSOL
- 2 COLTOSOL SYRINGE
- 3 GELATEMP
- 4 HYFLEX EDM FILES
- 5 SPEEDEX PUTTY
- 6 SPEEDEX UNIVERSAL
- 7 SPEEDEX LIGHT BODY
- 8 BRILLIANT COMPOSITE
- 9 DIATECH POLISHERS
- 10 STEEL SEPARATING STRIPS ROEKO
- 11 ARTICULATING PAPER 80
- 12 ARTICULATING PAPER 200
- 13 PRESIDENT THE ORIGINAL PUTTY
- 14 AFFINIS LIGHT BODY
- 15 AFFINIS PRECIOUS LIGHT BODY
- 16 ONE COAT 7 UNIVERSAL
- 17 PARACORE DENTIN

TEMPORARY FILLING

TEMPORARY FILLING

WOUND TREATMENT

ROTARY FILES

COMPOSITE

POLISHING

FINISHING AND POLISHING

OCCCLUSION CONTROL

OCCCLUSION CONTROL

IMPRESSION MATERIAL

WASH MATERIALS

WASH MATERIALS

LIGHT-CURED, ONE-COMPONENT BONDING AGENT USED WITH THE SELF-ETCHING

ONE MATERIAL FOR 3 KEY INDICATIONS (POST CEMENTATION, CORE-BUILD UPS, CROWN & BRIDGE CEMENTATION)



SDI

PRODUCTS

SDI

PRODUCTS

MADE IN AUSTRALIA



- | | | |
|----|-------------------------|--|
| 1 | STAE BOND | BOND |
| 2 | SET PP | CEMENTATION, IT ETCHES, BONDS, AND FILLS WITH JUST THE ONE COMPONENT. |
| 3 | SUPER ETCH | ETCHING GEL |
| 4 | RIVA LUTING P/L | GLASS IONOMER LUTING CEMENT POWDER/LIQUID |
| 5 | RIVA SELF CURE CAPSULE | BULK FILL GLASS HYBRID RESTORATIVE SYSTEM CAPSULES |
| 6 | RIVA LIGHT CURE CAPSULE | LIGHT CURED RESIN REINFORCED GLASS IONOMER RESTORATIVE MATERIAL |
| 7 | RIVA LUTING CAPSULE | GLASS IONOMER LUTING CEMENT CAPSULE |
| 8 | RIVA SILVER CAPSULE | SILVER-ALLOY REINFORCED GLASS IONOMER RESTORATIVE MATERIAL |
| 9 | RIVA SELF CURE P/L | BULK FILL GLASS HYBRID RESTORATIVE SYSTEM POWDER/LIQUID |
| 10 | RIVA CEM | RESIN MODIFIED GLASS IONOMER LUTING CEMENT |
| 11 | POLA NIGHT | ADVANCED TOOTH WHITENING SYSTEM (TAKE-HOME KIT) |
| 12 | POLA OFFICE + | ADVANCED TOOTH WHITENING SYSTEM (IN-OFFICE USE), NO MIXING IS REQUIRED |
| 13 | POLA OFFICE | ADVANCED TOOTH WHITENING SYSTEM (IN-OFFICE USE), MIXING IS REQUIRED |
| 14 | LUNA | ANTERIOR/POSTERIOR NANOHYBRID COMPOSITE |
| 15 | WAVE | FLUORIDE RELEASING FLOWABLE COMPOSITE |
| 16 | AURA BULK FILL | SPEEDY AND SIMPLE POSTERIOR COMPOSITE |
| 17 | AURA EASY | UNIVERSAL COMPOSITE |
| 18 | GS80 | HIGH STRENGTH AMALGAM |
| 19 | AMALGAM PERMITE | HIGH STRENGTH, EASY CARVING ADMIX AMALGAM |
| 20 | ULTRAMAT 2 | HIGH SPEED AMALGAMATOR |



FGM

PRODUCTS

FGM

PRODUCTS MADE IN BRAZIL



Al Manara Dental
مركز المنارة للأسنان

COMPOSITE
BOND

- 1 TOP DAM BLUE
- 2 DESENSIBILIZE KF 2
- 3 OPALLIS
- 4 LLIS
- 5 OPALLIS FLOW
- 6 OPUS BULK FILL APS
- 7 OPUS BULK FILL FLOW APS
- 8 LLIS KIT
- 9 AMBAR 6ML
- 10 AMBAR APS
- 11 AMBAR UNIVERSAL APS
- 12 CONDAC 37 ETCHING



FGM

PRODUCTS MADE IN BRAZIL



Al Manara Dental
مركز المنارة للأسنان

WHITENING

- 12 CONDAC PORCELANA
- 13 ALLCEM VENEER APS MINI KIT
- 14 ALLCEM CORE
- 15 ALLCEM DUAL
- 16 ORTHOCEM BRACKET CEMENT
- 17 PLATES FOR DENTAL TRAY
- 18 WHITENESS RM
- 19 WHITENESS SUPER ENDO
- 20 WHITENESS PERBORATO
- 21 WHITENESS HP MAXX KIT
- 22 WHITENESS PERFECT (AT HOME USE)
- 23 WHITENESS HP AUTOMIXX (IN OFFICE USE)
- 24 DIAMOND MASTER
- 25 TOP COMFORT



MANI

PRODUCTS

MANI

PRODUCTS | MADE IN JAPAN

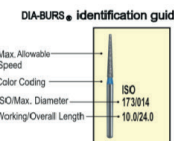
MANI
FOR ADVANCED TREATMENT

Al Manara Dental
مركز المنارة للأسنان

ISO 546/011 8.121.9	ISO 196/020 5.119.0	ISO 196/015 4.119.0	ISO 197/012 7.121.5	ISO 198/013 8.121.5	ISO 179/010 9.221.0	ISO 237/020 5.118.9	ISO 237/013 4.219.0	ISO 297/013 7.121.0	ISO 288/015 7.121.0	ISO 257/015 3.219.0
CE-17F	CR-11F	CR-12F	CR-21F	CR-22F	EX-18F	EX-21F	EX-31F	FO-21F	FO-22F	FO-30F
ISO 001/010 0.919.2	ISO 539/007 3.819.2	ISO 139/007 3.819.2	ISO 156/009 3.219.2	ISO 198/020 8.122.1	ISO 198/017 8.222.1	ISO 277/022 4.720.6	ISO 237/019 5.119.1	ISO 041/039 0.719.1	ISO 166/015 10.121.9	ISO 165/013 8.121.9
MI-45F	MI-53F	MI-51F	MI-42F	Pro-1f	Pro-2f	Pro-3f	Pro-4f	Pro-5f	TC-11F	TC-21F
ISO 173/015 10.121.7	ISO 199/015 9.121.7	ISO 198/017 9.121.7	ISO 197/015 10.121.6	ISO 199/015 9.121.7	ISO 198/017 9.121.7	ISO 072/015 0.619.1	ISO 072/015 0.619.1	ISO 072/015 0.619.1	ISO 072/015 0.619.1	ISO 072/015 0.619.1
TR-13F	TF-21F	TR-11F	TR-13F	TR-21F	TR-25F	TR-26F	WR-31F	WR-51F		
ISO 298/016 8.321.9	ISO 141/014 8.322.3	ISO 141/016 8.322.3	ISO 141/018 8.322.3	ISO 166/018 10.322.1	ISO 173/016 10.321.9	ISO 173/018 10.321.9	ISO 173/020 10.321.9	ISO 170/023 5.619.1	ISO 170/018 4.319.1	ISO 103/219
SO-219C	SR-119C	SR-139C	SR-139C	TC-119C	TF-119C	TF-129C	TF-139C	TF-229C	TF-319C	TR-139C
ISO 198/020 9.321.9	ISO 199/024 9.422.1	ISO 199/024 11.523.9	ISO 199/025 11.523.9	ISO 197/018 7.321.2	ISO 072/044 2.019.2	ISO 508/019 9.621.0	ISO 166/017 10.222.0	ISO 173/019 10.221.8	ISO 198/019 9.321.8	ISO 198/019 9.321.8
TR-145C	TR-185C	TR-195C	TR-215C	WR-115C	FO-54C	TC-11C	TR-13C			
ISO 197/018 7.220.0	ISO 072/043 2.019.2	ISO 001/019 1.719.1	ISO 257/019 3.919.7	ISO 111/015 1.819.0	ISO 010/015 1.819.0	ISO 020/018 2.419.1	ISO 002/018 3.619.1	ISO 002/014 2.519.1	ISO 002/012 2.619.1	ISO 002/012 2.619.1
TR-42C	WR-11C	BR-31C	FO-32C	SF-12C	SI-41C	BC-31	BC-32	BC-42	BC-43	
ISO 001/018 1.619.1	ISO 001/014 1.319.1	ISO 001/010 0.919.1	ISO 001/012 1.119.1	ISO 001/008 0.719.0	ISO 020/011 2.419.1	ISO 032/014 3.319.1	ISO 030/032 5.019.1	ISO 030/035 7.220.1	ISO 553/019 10.423.2	ISO 237/018 5.219.1
BR-31	BR-41	BR-45	BR-46	BR-47	DI-41	DI-42	EX-11	EX-12	RS-11	EX-20
ISO 237/021 5.219.0	ISO 198/017 10.124.0	ISO 298/022 9.019.0	ISO 545/018 7.221.2	ISO 237/014 4.319.1	ISO 544/019 4.419.2	ISO 237/011 3.119.1	ISO 299/014 10.224.1	ISO 297/014 7.221.1	ISO 288/016 7.221.1	ISO 257/028 6.019.1
EX-21	EX-24	EX-26	RS-21	EX-31	RS-31	EX-41	FO-11	FO-21	FO-22	FO-25
ISO 257/032 5.019.1	ISO 257/018 3.919.7	ISO 111/012 8.222.1	ISO 111/014 8.222.0	ISO 111/016 8.222.1	ISO 110/014 7.221.0	ISO 109/013 4.719.1	ISO 198/011 4.319.0	ISO 101/013 1.419.0	ISO 010/015 1.819.0	ISO 010/017 1.919.0
FO-27	FO-32	SF-11	SF-12	SF-13	SF-21	SF-31	SF-41	SI-46	SI-47	SI-48
ISO 198/015 8.921.6	ISO 198/019 8.919.9	ISO 297/012 5.915.9	ISO 197/012 5.915.9	ISO 544/015 4.014.2	ISO 544/018 4.215.9	ISO 544/015 4.215.9	ISO 544/015 4.215.9	ISO 198/019 8.919.9	ISO 198/019 8.919.9	ISO 198/019 8.919.9
TR-20F	TR-314F	TR-314F	EX-SS13F	EX-SS14F	EX-SS13F	RS-SS13F				
Short Shank	Short Shank	Short Shank	Super Short Shank	Super Short Shank	Super Short Shank	Super Short Shank				

ISO 001/020 1.819.2	ISO 001/018 1.620.3	ISO 001/016 1.419.2	ISO 001/012 1.119.2	ISO 001/014 1.219.2	ISO 039/034 5.119.2	ISO 237/023 5.319.1	ISO 237/034 5.119.1	ISO 297/016 7.321.2	ISO 288/018 7.321.2	
MANI No.	BR-31SC	BR-48SC	BR-41SC	BR-45SC	BR-46SC	EX-11SC	EX-21SC	EX-26SC	FO-21SC	FO-23SC
ISO 257/034 5.219.2	ISO 257/020 4.019.8	ISO 111/014 8.322.2	ISO 111/016 8.322.1	ISO 111/018 8.322.2	ISO 110/016 7.321.1	ISO 109/015 4.819.2	ISO 109/013 4.419.1	ISO 010/015 1.519.1	ISO 010/017 1.919.1	ISO 010/019 2.019.1
FO-27SC	FO-32SC	SF-11SC	SF-12SC	SF-13SC	SF-21SC	SF-31SC	SF-41SC	SI-46SC	SI-47SC	SI-48SC
ISO 298/016 8.321.9	ISO 141/014 8.322.3	ISO 141/016 8.322.3	ISO 141/018 8.322.3	ISO 166/018 10.322.1	ISO 173/016 10.321.9	ISO 173/018 10.321.9	ISO 173/020 10.321.9	ISO 170/023 5.619.1	ISO 170/018 4.319.1	ISO 103/219
SO-219C	SR-119C	SR-139C	SR-139C	TC-119C	TF-119C	TF-129C	TF-139C	TF-229C	TF-319C	TR-139C
ISO 198/020 9.321.9	ISO 199/024 9.422.1	ISO 199/024 11.523.9	ISO 199/025 11.523.9	ISO 197/018 7.321.2	ISO 072/044 2.019.2	ISO 508/019 9.621.0	ISO 166/017 10.222.0	ISO 173/019 10.221.8	ISO 198/019 9.321.8	ISO 198/019 9.321.8
TR-145C	TR-185C	TR-195C	TR-215C	WR-115C	FO-54C	TC-11C	TR-13C			
ISO 197/018 7.220.0	ISO 072/043 2.019.2	ISO 001/019 1.719.1	ISO 257/019 3.919.7	ISO 111/015 1.819.0	ISO 010/015 1.819.0	ISO 020/018 2.419.1	ISO 002/018 3.619.1	ISO 002/014 2.519.1	ISO 002/012 2.619.1	ISO 002/012 2.619.1
TR-42C	WR-11C	BR-31C	FO-32C	SF-12C	SI-41C	BC-31	BC-32	BC-42	BC-43	
ISO 001/018 1.619.1	ISO 001/014 1.319.1	ISO 001/010 0.919.1	ISO 001/012 1.119.1	ISO 001/008 0.719.0	ISO 020/011 2.419.1	ISO 032/014 3.319.1	ISO 030/032 5.019.1	ISO 030/035 7.220.1	ISO 553/019 10.423.2	ISO 237/018 5.219.1
BR-31	BR-41	BR-45	BR-46	BR-47	DI-41	DI-42	EX-11	EX-12	RS-11	EX-20
ISO 237/021 5.219.0	ISO 198/017 10.124.0	ISO 298/022 9.019.0	ISO 545/018 7.221.2	ISO 237/014 4.319.1	ISO 544/019 4.419.2	ISO 237/011 3.119.1	ISO 299/014 10.224.1	ISO 297/014 7.221.1	ISO 288/016 7.221.1	ISO 257/028 6.019.1
EX-21	EX-24	EX-26	RS-21	EX-31	RS-31	EX-41	FO-11	FO-21	FO-22	FO-25
ISO 257/032 5.019.1	ISO 257/018 3.919.7	ISO 111/012 8.222.1	ISO 111/014 8.222.0	ISO 111/016 8.222.1	ISO 110/014 7.221.0	ISO 109/013 4.719.1	ISO 198/011 4.319.0	ISO 101/013 1.419.0	ISO 010/015 1.819.0	ISO 010/017 1.919.0
FO-27	FO-32	SF-11	SF-12	SF-13	SF-21	SF-31	SF-41	SI-46	SI-47	SI-48
ISO 198/015 8.921.6	ISO 198/019 8.919.9	ISO 297/012 5.915.9	ISO 197/012 5.915.9	ISO 544/015 4.014.2	ISO 544/018 4.215.9	ISO 544/015 4.215.9	ISO 544/015 4.215.9	ISO 198/019 8.919.9	ISO 198/019 8.919.9	ISO 198/019 8.919.9
TR-20F	TR-314F	TR-314F	EX-SS13F	EX-SS14F	EX-SS13F	RS-SS13F				
Short Shank	Short Shank	Short Shank	Super Short Shank	Super Short Shank	Super Short Shank	Super Short Shank				

ISO 297/012 6.221.0	ISO 298/014 8.221.8	ISO 141/012 8.222.2	ISO 141/014 8.222.2	ISO 141/016 8.222.2	ISO 166/016 10.222.0	ISO 166/018 10.423.2	ISO 165/014 8.222.0	ISO 164/011 6.121.2	ISO 173/014 10.224.0	ISO 173/016 10.221.8
SO-30	SO-31	SR-11	SR-12	SR-13	TC-11	TC-16	TC-21	TC-26	TF-11	TF-12
ISO 173/018 10.221.8	ISO 172/023 9.321.8	ISO 171/014 7.221.0	ISO 171/016 7.221.0	ISO 170/021 5.519.0	ISO 170/018 5.220.1	ISO 170/016 4.219.0	ISO 168/011 3.719.1	ISO 170/012 4.219.0	ISO 170/014 4.219.0	ISO 198/016 10.221.8
TF-13	TF-14	TF-30	TF-21	TF-22	TF-23	TF-31	TF-41	TF-42	TF-43	TR-11
ISO 199/016 10.221.8	ISO 198/018 9.221.8	ISO 198/022 9.322.0	ISO 199/022 11.423.8	ISO 197/014 7.221.0	ISO 197/016 7.221.1	ISO 197/016 7.221.2	ISO 199/016 10.221.7	ISO 199/018 9.221.8	ISO 198/018 9.221.8	ISO 041/024 0.619.2
TR-11	TR-13	TR-14	TR-15	TR-19	TR-20	TR-21	TR-24	TR-25	TR-26	WR-30
ISO 072/042 1.919.1	ISO 002/014 2.518.7	ISO 002/012 2.618.7	ISO 001/010 0.918.7	ISO 001/012 1.118.7	ISO 032/011 2.417.2	ISO 297/014 7.218.2	ISO 508/019 9.620.0	ISO 001/008 1.017.1	ISO 272/024 4.817.1	
WR-13	BC-542	BC-543	BC-545	BR-546	DI-541	FO-521	FO-554	MI-545	Pro-53	
ISO 199/011 3.816.7	ISO 010/013 1.416.6	ISO 010/017 1.916.6	ISO 297/012 6.218.8	ISO 165/014 8.220.0	ISO 173/016 10.321.2	ISO 171/014 7.218.8	ISO 171/016 7.218.8	ISO 170/021 5.516.9	ISO 170/018 5.217.1	ISO 4216.8
SF-541	SI-546	SI-548	SO-520	TC-521	TF-512	TF-520	TF-521	TF-522	TF-523	TF-531
ISO 168/011 3.716.8	ISO 296/019 9.620.9	ISO 198/022 9.320.1	ISO 197/016 7.218.8	ISO 138/009 2.316.1	ISO 032/011 2.414.5	ISO 297/014 6.116.1	ISO 197/015 6.116.1	ISO 544/016 4.214.3	ISO 544/016 4.214.3	ISO 544/019 4.516.1
TF-541	TR-515	TR-514	TR-521	CD-551	DI-554	EX-5313	EX-5314	EX-5315	EX-5331	RS-5331
ISO 165/014 3.816.7	ISO 170/016 4.214.3	ISO 197/016 7.217.7	ISO 197/016 7.218.8	ISO 001/006 0.616.7	ISO 138/007 2.216.7	ISO 138/007 3.816.7	ISO 138/007 3.816.7	ISO 544/016 4.216.7	ISO 296/007 2.216.7	ISO 277/008 1.216.7
TC-5521	TF-5511	TR-5521		BR-48F	CD-58F	CD-51F	CD-52F	CD-51F	CD-54F	CD-55F
ISO 295/007 2.216.7	ISO 295/007 3.816.7	ISO 156/009 3.216.2	ISO 197/013 6.916.7	ISO 001/006 0.519.0	ISO 138/007 2.219.0	ISO 138/007 3.819.0	ISO 156/009 3.219.0	ISO 546/021 9.121.7	ISO 544/020 5.318.9	ISO 254/027 4.820.6
CD-58F	CD-57F	CD-58F	CD-59F	CD-60F	CD-41F	CD-42F	CE-12F	CE-13F	CE-15F	CE-16F
ISO 295/007 2.216.7	ISO 295/007 3.816.7	ISO 156/009 3.216.2	ISO 197/013 6.916.7	ISO 001/006 0.519.0	ISO 138/007 2.219.0	ISO 138/007 3.819.0	ISO 156/009 3.219.0	ISO 546/021 9.121.7	ISO 544/020 5.318.9	ISO 254/027 4.820.6
CD-58F	CD-57F	CD-58F	CD-59F	CD-60F	CD-41F	CD-42F	CE-12F	CE-13F	CE-15F	CE-16F



Maximum Allowable Speed



MANI PRODUCTS



DTC

PRODUCTS

DTC

PRODUCTS ORTHODONTICS LINE



Al Manara Dental
مركز المنارة للأسنان

- 1 BRACKETS MBT
- 2 BRACKET MINI ROTH
- 3 SEPERATORS
- 4 ELASTANE CHAINS
- 5 LIGATURE TIE
- 6 ORTHODONTICS WIRES
- 7 BUCKLE TUBE
- 8 CRIMPABLE HOOKS
- 9 POWER CHAIN
- 10 LIGATURE WIRE



SELF LIGATING MINI BRACKET



CROSSED POSITIONING GAUGE



TWEEZERS



LIGHT WIRE PLIERS WITH CUTTER



POWER CHAINS



LIGATURE TIE



ELASTIC PLIER



DISTAL END CUTTER
WITH SAFETY HOLDING



SEPERATORS



ELASTANE CHAIN



BRACKET REMOVING PLIERS



ARCH WIRE BOX-ROUND WIRES



LINGUAL CHAIN



MULTI-FUNCTION PLIERS



BAND REMOVER

DTC PRODUCTS



Al Manara Dental
مركز المنارة للأسنان



TWEED LOOP PLIERS



POSTERIOR BRACKET REMOVING PLIERS



NEEDLE HOLDER



STAINLESS STEEL
LIGATURE WIRES



TORQUE PLIERS



KIM PLIERS



BONDABLE LINGUAL
BUTTONS ELLIPTICAL



KOBAYASHI WIRES



NANCE LOOP BENDING PLIERS



PLIERS STANDS



BONDABLE LINGUAL
BUTTON ROUND



HEAT ACTIVATED NITI ARCH WIRES



GK
GAPADENT
MATRIX
SSWHITE
UDG
CK
PRODUCTS

GK

AMALGAM AND COMPOSITE

MATRIX

PRODUCTS

CK

PRODUCTS

UDG

ROTARY FILES

SSWHITE

MOUTHTABLETS
IMPRESSION PASTE

GAPADENT

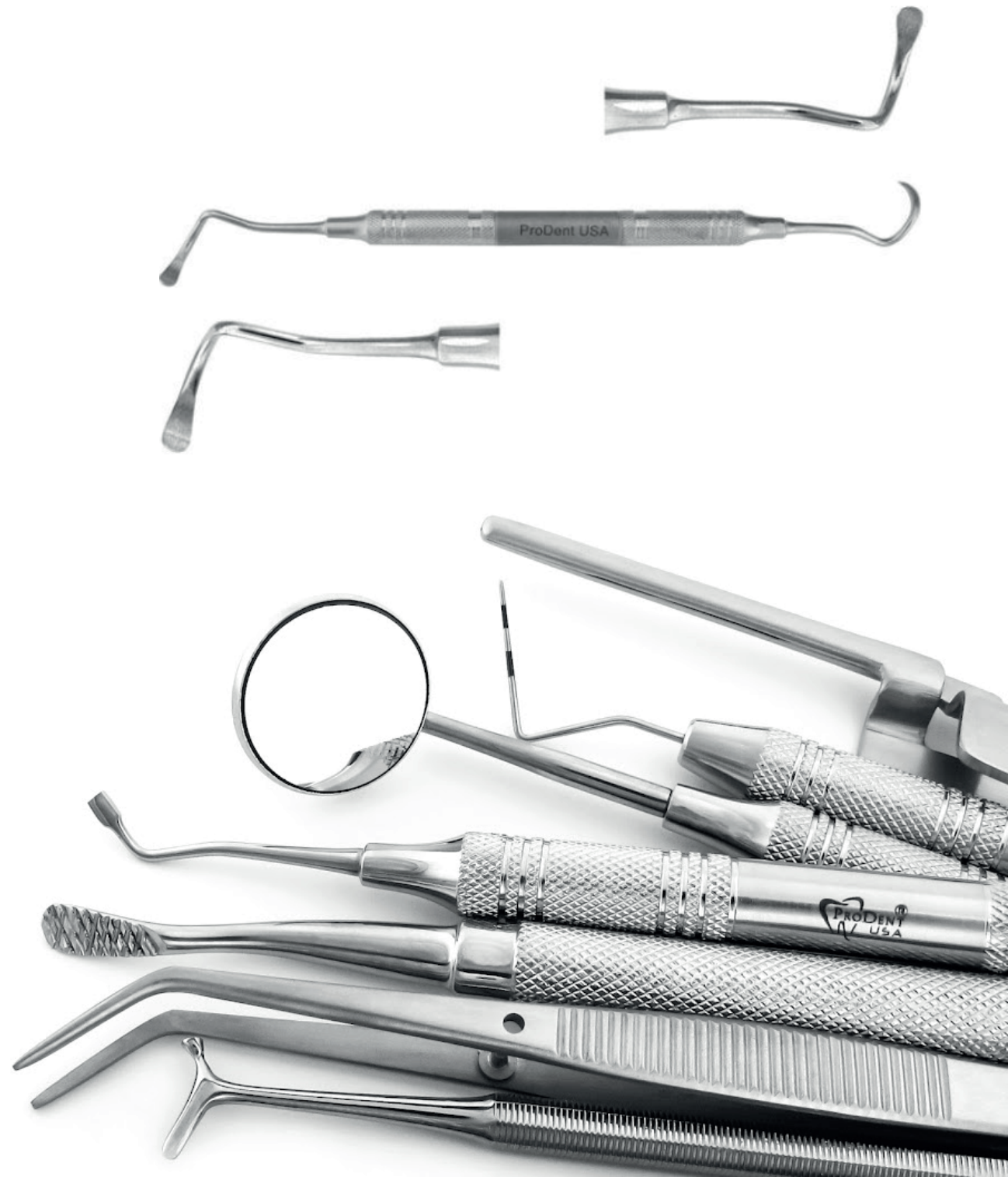
GUTTA PERCHA
PAPER POINTS



PRODENT USA

PRODUCTS

DENTAL INSTRUMENTS



DISPOSABLES

PRODUCTS

DISPOSABLE PRODUCTS

- 1 COMPOSITE GUN
- 2 BOND BRUSH
- 3 SHARP BOX
- 4 COTTON ROLL
- 5 COTTON ROLL DISPENSER
- 6 DENTAL WEDGES
- 7 BURS HOLDER
- 8 MOUTH GAG
- 9 SURGICAL BLADES
- 10 SAFETY GLASSES
- 11 DENTAL BIB
- 12 STERILIZATION ROLL
- 13 STERILIZATION POUCH
- 14 AIR WATER SYRINGE TIP
- 15 SUCTION TUBE
- 16 SALIVA EJECTOR
- 17 IMPRESSION GUN
- 18 IRRIGATION NEEDLE
- 19 FLUORIDE TRAY DOUBLE SPAN

- 20 IMPRESSION TRAY
- 21 DIPPEN DISH GLASS
- 22 DISPOSABLE DENTAL KIT
- 23 FACE MASK
- 24 DENTAL BIB WITH HOLE
- 25 GAUZE
- 26 RETAINER BOX
- 27 FLAME
- 28 PLASTIC AMALGAM CARRIER
- 29 METAL AMALGAM CARRIER
- 30 ACRYTEMP TIPS
- 31 HYDRORISE TIPS

- 32 ELITE TIPS
- 33 CLEANING BRUSH
- 34 APRON HOLDER
- 35 ALUMINUM CROWN
- 36 MOUTH GAG
- 37 COLOR INDICATOR TAPE
- 38 METAL GUN
- 39 IMPRESSION GUN



QUICKLASE

PRODUCTS

QUICKLASE

PRODUCTS

MADE IN UK

QuickLase™

Al Manara Dental
مركز المنارة للأسنان

THE 12W DUAL LASER IS THE MOST POWERFUL LASER SYSTEM [3 IN 1 LASER]. IT COMES WITH 810NM AND 980NM WAVELENGTHS AT THE SAME TIME FOR ULTIMATE POWER CUTTING, ULTIMATE COAGULATION, AND STERILIZATION. ALL IN ONE HAND-PIECE:

- SOFT TISSUE LASING, WHITENING, THERAPY LLLT
- 12W DUAL 810NM + 980NM SIMULTANEOUS POWER
- 4 COLOUR TOUCH SCREEN
- BUILD-IN 20 PRESET PROCEDURE
- BUILD-IN FIBER OPTIC CADDY
- SMALL ENOUGH TO FIT IN A BRIEFCASE
- WEIGHS JUST 1.6 KG
- %100 EMC PROTECTION WITH AN ALUMINUM LIGHT STEEL CASE.



7 Key Applications

Surgery - Implants - Coagulation - Perio - Endo - LLLT Therapy - Whitening

All-in-One Handpiece

Lasing, Whitening & TMJ Therapy



KEJU

DENTAL UNITS

KEJU

KJ 916 AND 918



Al Manara Dental
مركز المنارة للأسنان

UP > DOWN



LIFT > RIGHT



RUNYES

PRODUCTS

RUNYES PRODUCTS

1 DENTAL UNITS

CARE 33 UP AND DOWN

2 AUTOCLAVE

AUTOCLAVE B CLASS
SMALL STEAM STERILIZER

3 INFECTION CONTROL

SEALING MACHINE
DISTILLER WATER
ULTRASONIC CLEANER

4 DIGITAL

INTRA ORAL SCANNER

5 X-RAYS

X-RAY WALL MOUNTED
X-RAY MOBILE
DC X-RAY

6 SENSOR

SENSOR DS530

AIR COMPRESSOR
SUCTION MACHINE



RUNYES

INTRA ORAL SCANNER

Runyes®
FOCUS ON DENTAL

Al Manara Dental
مركز المنارة للأسنان

PRODUCT FEATURES



POWDERLESS, REAL COLOR,
LIGHT WEIGHT



CONSTANT TEMPERATURE
PROTECTION DESIGN



LED LIGHT SOURCE WITHOUT
RADIATION



HIGH ACCURACY



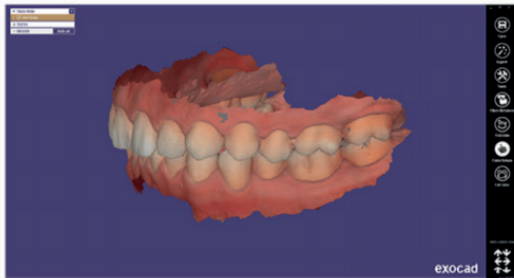
FASTER



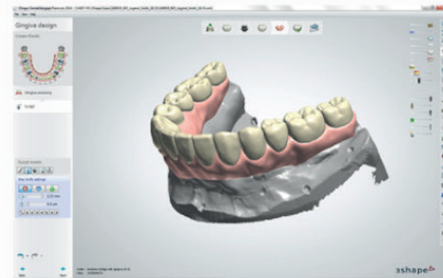
SIMPLE OPERATION



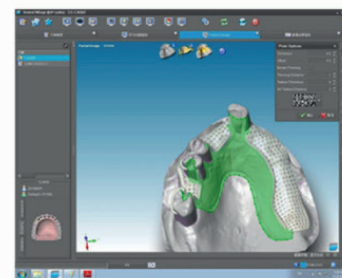
OPEN DATA



EXOCAD



3SHAPE



DENTAL WINGS

RUNYES

DENTAL UNITS
CARE 33 UP AND DOWN

Runyes
FOCUS ON DENTAL

Al Manara Dental
مركز المنارة للأسنان



DCI EDGE

PRODUCTS

DCI EDGE

DENTAL UNITS

MADE IN USA

- | | | |
|---|--------------|---------------------|
| 1 | DCI MAPLE 42 | UP AND DOWN MOUNTED |
| 2 | DCI MAPLE 62 | UP AND DOWN MOUNTED |



MACHINE - ACCESSORIES.

Low Speed Air Motor



Low Speed Hand-piece Kit



C-BRIGHT Teeth whitening



Amalgamator

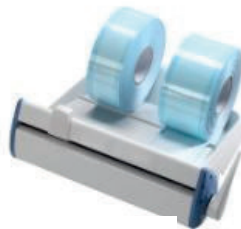


Amalgamator SDI



SDI

Sealing Machine



Runyes
FOCUS ON DENTAL

Distiller Water



Runyes
FOCUS ON DENTAL

Contra Angle



MACHINE - ACCESSORIES.

C-Smart Mini AP



Light Cure Ortho



Light Cure (O-Light 1 Second)



Curing Light LED.G



C-SMART-I PRO Endo motors



High Speed Handpiece



Straight Hand piece



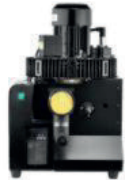
Endodontic Obturation System



MACHINE - ACCESSORIES.

Suction System

Runyes
FOCUS ON DENTAL



Air Compressor

Runyes
FOCUS ON DENTAL



Sander gun



Stool Chair



Apex Locators

New



Titanium High Speed Handpiece (BD)



Low speed handpiece (058x 058)



Scaler Tip



Ultrasonic Cleaner

Runyes
FOCUS ON DENTAL



Apex Locator & Pulp Tester

New



COMPANY
PROFILE




 Al Nahda St. Ramallah

 02 2953718

 almanaradental.ps

 @almanara_dental

 Al-Manara Distribution Center
مركز المنارة للأسنان