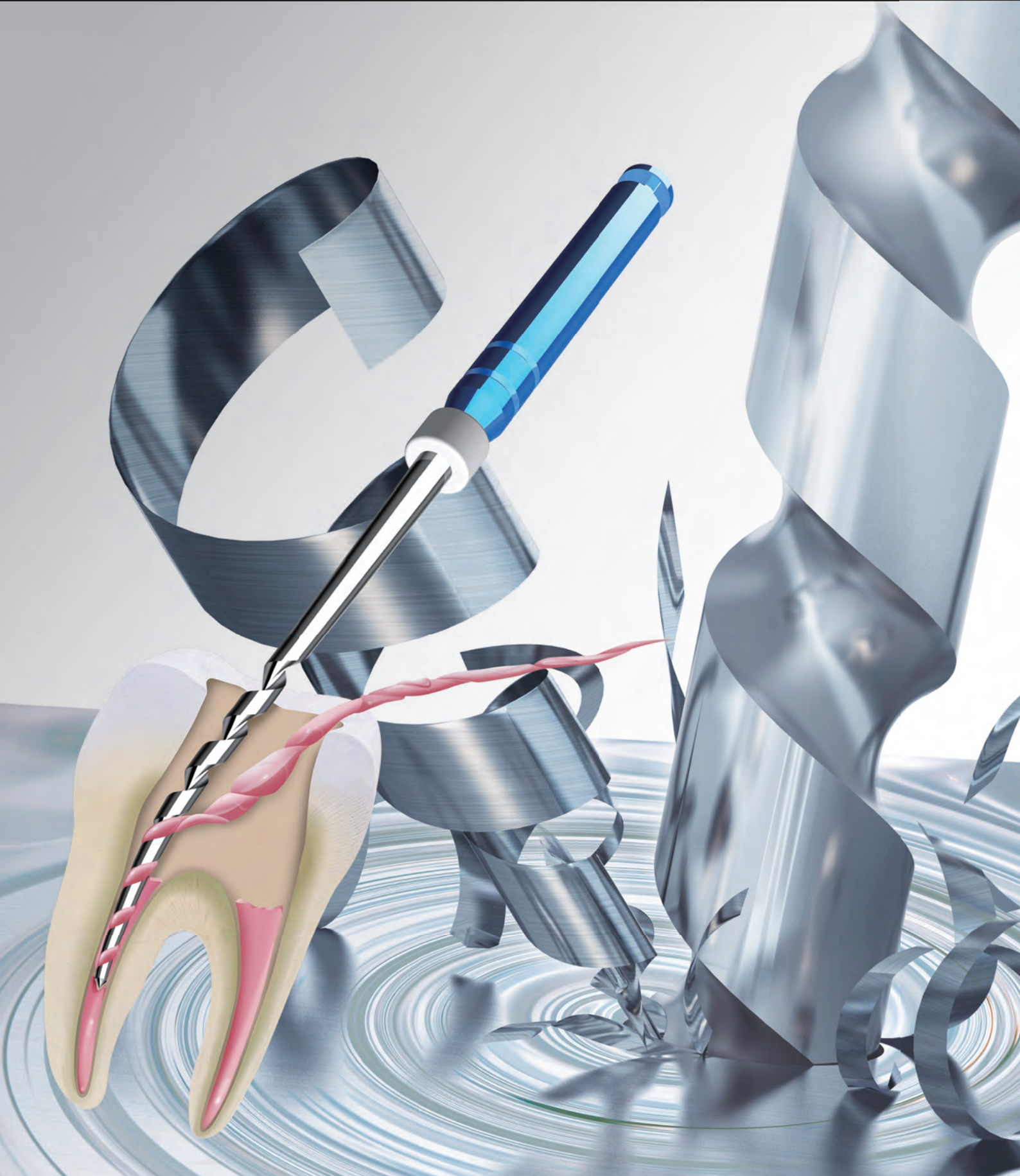


GPR

MANI®

— GUTTA PERCHA REMOVER —



Superior Results!

Fast, Easy, & Efficient

Two Simple Steps!

STEP 1 → **STEP 2**

From crown to middle

- Select 1S/#70 or 2S/#50. (Depend on the shape of root canal)
- Attach the File on the top of GP (Gutta Percha) and rotate softly
- 1st groove catching the GP and file goes into the deep naturally.
- Pause the file 1-2 seconds at around the middle of the canal. (before the curve)
- Move the file in pull-stroke motion and remove the debris. STEP1-Finish.

From the middle to the apical 1~2mm

- Select 3N/#40 or 4N/#30. (Depend on curve of root canal)
- Set a rubber stopper length of 1-2mm upto the apex.
- Pause the file 1-2 seconds at around the middle~1-2mm short from the apex.
- Move the file in pull-stroke motion and remove the debris. STEP2-Finish.

1S

2S

3N

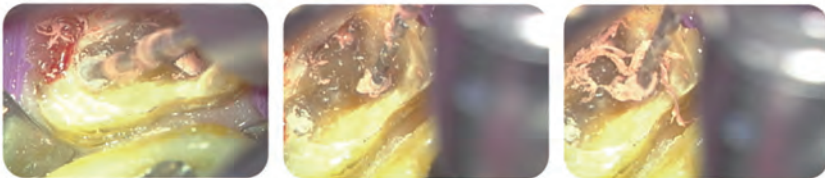
4N

Hyperelasticity+Shape Memory Effect

Take Note

Thermally treated 5mm tip **Shape Memory Effect** files increase flexibility and fatigue resistance (compared with conventional products)

Examples



Provided by Dr. Yasuhisa Tsujimoto Nihon University School of Dentistry at Matsudo Department of Dentistry

FEATURES

- Stress-free and easy to use, without torque control and reversal !
- Fast & dynamic removal !
- No need for solvents !

Max. Allowable Speed **1000±500min⁻¹**

Model Name	Size	Taper	Working Length	Material	Pack
1S	#70	0.04	16mm	Stainless	4pcs
2S	#50	0.04	18mm	Stainless	4pcs
3N	#40	0.04	21mm	NiTi	4pcs
4N	#30	0.04	21mm	NiTi	4pcs
Assorted Pack	#70×1 #50×1 #40×1 #30×1	0.04	16mm×1 18mm×1 21mm×1 21mm×1	Stainless 2pcs. NiTi 2pcs.	4pcs

⚠ Please read attached instructions carefully before use

MANI®

8-3 KIYOHARA INDUSTRIAL PARK, UTSUNOMIYA TOCHIGI, 321-3231, JAPAN
 Phone:+81-28-667-8592 Fax:+81-28-667-8593
 E-mail:dental.exp@ms.mani.co.jp Website:http://www.mani.co.jp/en/index.html

D05410