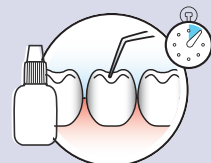
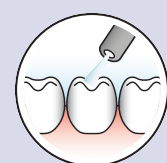


INSTRUCTIONS FOR CAPSULES[^]

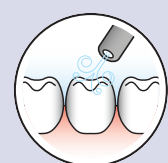
1 Isolate tooth, prepare cavity. Apply Riva Conditioner for 10 seconds.



2 Wash thoroughly.

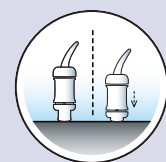


3 Remove excess water. Keep moist.

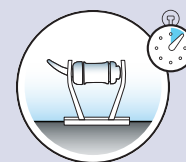


4 Activate the capsule and immediately mix in a triturator. Do not click before you mix.

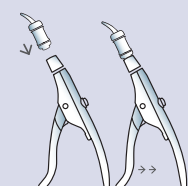
Press capsule down to click.



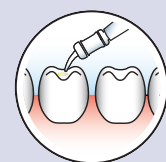
Ten seconds in a triturator.



5 Immediately place into capsule applicator and click trigger until paste is seen through the nozzle.



6 Extrude Riva Self Cure into cavity and contour.

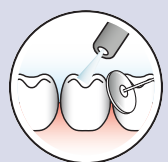


7 Apply Riva Coat and light cure.

Light cure each increment for 10 seconds.



8 Commence final finishing under water spray.



9 Apply Riva Coat and light cure.

Light cure each increment for 10 seconds.



[^] For powder and liquid instructions, please refer to Instructions for Use



ORDER DETAILS



CAPSULES

Riva Self Cure Capsules

50 Riva Self Cure Capsules - Regular Set

A1	8600001
A2	8600002
A3	8600003
A3.5	8600004
A4	8600005
B2	8600007
B3	8600008

Riva Self Cure Capsules

50 Riva Self Cure Capsules - Fast Set

A1	8605001
A2	8605002
A3	8605003
A3.5	8605004
A4	8605005
B2	8605007
B3	8605008
T-A2	860 0011
T-A3	8600012
T-A3.5	8600013

Riva Self Cure Capsules

10 Capsules A1, A2, A3, A3.5 and B2

Regular Set	8610000
Fast Set	8620000

Riva Self Cure HV Capsules

50 Riva Self Cure HV Capsules

A1	8630001
A2	8630002
A3	8630003
A3.5	8630004



LIQUID

Riva Self Cure Liquid Kits

6.9mL (8g) Riva Self Cure Liquid

15g Riva Self Cure Powder Accessories

A1	8610501
A2	8610502
A3	8610503
A3.5	8610504
A4	8610505
B2	8610507
B3	8610508

9.5mL (11g) Riva Self Cure Liquid

15g Riva Self Cure Powder Accessories

T-A2	8610521
T-A3	8610522
T-A3.5	8610523

5.2mL (6g) Riva Self Cure Liquid bottle

10g Riva Self Cure Powder bottle Accessories

A2	8610612
A3	8610613
A3.5	8610614

2.6mL (3g) Riva Self Cure Liquid bottle

5g Riva Self Cure Powder bottle accessories

A2	8600602
A3	8600603
A3.5	8600604

Riva Self Cure Liquid

6.9mL (8g) Bottle	8610900
9.5mL (11g) Bottle	8610905
For T-A2, T-A3, T-A3.5	



POWDER

Riva Self Cure Powder

15g Riva Self Cure Powder

A1	8610101
A2	8610102
A3	8610103
A4	8610105
T-A2	8610121
T-A3	8610122



APPLICATORS

Riva Applicator	5545009
Riva Applicator 2	5545013
Riva Applicator 2 Black	5545023



ACCESSORIES

Riva Coat 5mL bottle refill	8610001
Riva Conditioner 10mL bottle refill	8620001

* Not the registered trademarks of SDI Limited.

** Published and SDI Test Data.

[1] Duong T, Tran L, Perry R, Kugel G (2007). Microleakage testing in vitro using three different bases under composites. Special Issue of the Journal of Dental Research. Tufts University

[2] Shiozawa M, Takahashi H, Iwasaki N; Fluoride Release and Mechanical Properties After 1-Year Water Storage of Recent Restorative Glass Ionomer; Clinical Oral Invest; July, 2013.

SDI | YOUR SMILE. OUR VISION.

MADE IN AUSTRALIA
by SDI Limited
Bayswater, Victoria 3153
Australia 1800 337 003
www.sdi.com.au

AUSTRIA 00800 0225 5734
BRAZIL 0800 770 1735
FRANCE 00800 0225 5734
GERMANY 0800 100 5759
ITALY 00800 0225 5734

NEW ZEALAND 0800 734 034
SPAIN 00800 0225 5734
UNITED KINGDOM 00800 0225 5734
USA & CANADA 1 800 228 5166



RIVA SELF CURE
GLASS IONOMER RESTORATIVE MATERIAL



STRONG
DENTINE
REPLACEMENT

RIVA SELF CURE AND RIVA SELF CURE HV - IDEAL FOR MINIMALLY INVASIVE DENTISTRY

Riva Self Cure is the ideal restorative material for use in minimally invasive dentistry (MID) as it is a bioactive material which prevents caries from occurring. Natural tooth structure is preserved, so large cavities and undercuts are not necessary.

Riva Self Cure utilises SDI's proprietary *ionglass™* filler developed by our glass technologists. *ionglass™* is a radiopaque, high ion releasing, bioactive glass used in SDI's range of glass ionomer products. Riva Self Cure releases substantially higher fluoride to assist with remineralisation of the natural dentition.



**BPA &
HEMA FREE**

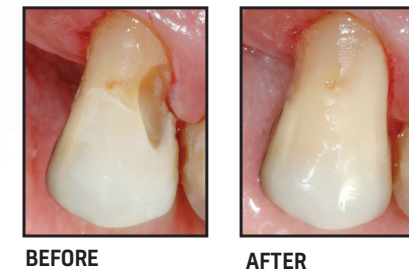


**COMPRESSIVE
STRENGTH**
271MPa
@ 7 DAYS

**LOW ACID
EROSION**
0.10MM

MOST NATURAL SHADE SELECTION

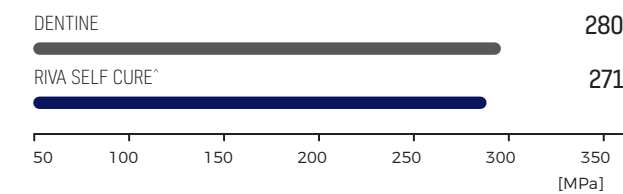
The T shade range provides higher translucency and better optical properties which blend in well with tooth surroundings and resembles the natural dentition.



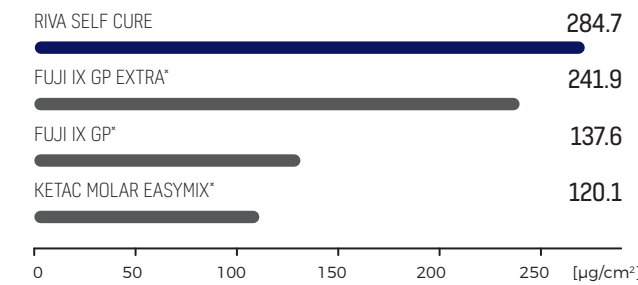
THE STRONGEST DENTINE REPLACEMENT

When dentine is missing, use Riva Self Cure to replace it. It is the best dental material available today that virtually mimics dentine. No adhesive is required, and sensitivity is non-existent. Like dentine, Riva Self Cure has a very high compressive strength, ensuring it will withstand long term mastication forces.

COMPRESSIVE STRENGTH @ 7 DAYS MPA**



CUMULATIVE FLUORIDE RELEASE @ 1 YEAR^[2]

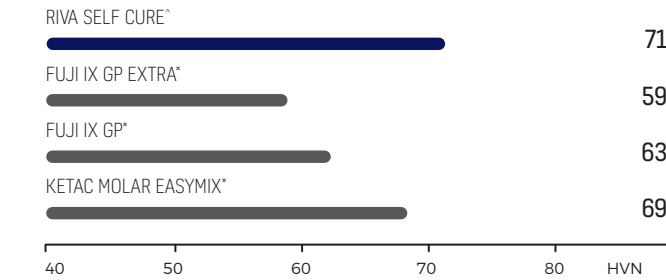


GREATER SURFACE HARDNESS

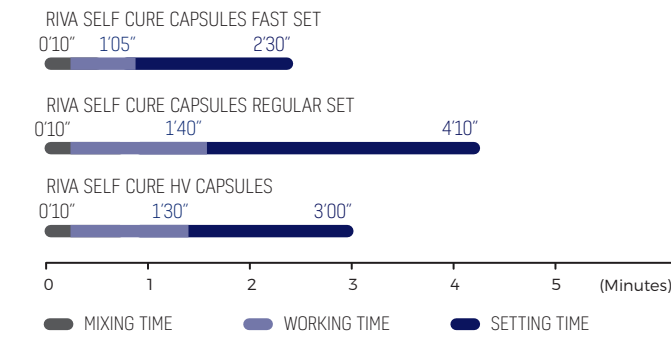
SURFACE HARDNESS

The greater the surface hardness, the greater the resistance to abrasive wear. Riva Self Cure is a dynamic glass ionomer cement that can withstand high penetration of the surface.

SURFACE HARDNESS @ 1 WEEK**



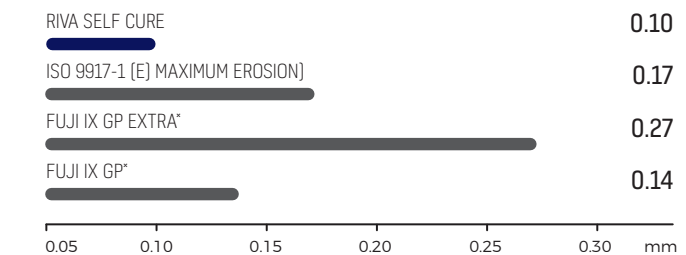
SETTING TIMES



LOW ACID EROSION

Riva Self Cure has a very low acid erosion value. This improves the longevity of the restoration, resisting disintegration and wear caused by oral acidity. The ISO Standard dictates that a material cannot have acid erosion of more than 0.17mm.

DEPTH OF ACID EROSION AFTER 24 HOURS**



*Riva Self Cure HV (High Viscosity)

ADVANTAGES

- Chemically adheres to tooth structure
- Strongest dentine replacement
- BPA & HEMA free
- High fluoride releasing and recharging ability
- No shrinkage
- Great marginal adaptation
- High acid resistance
- Excellent for minimally invasive dentistry (MID)
- Bioactive proprietary *ionglass™* technology - high ion exchange
- Radiopaque
- Suitable for bulk filling

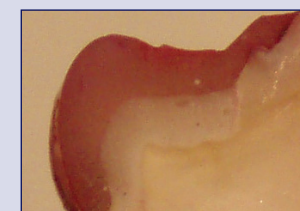
INDICATIONS

- Non stress bearing Class I and II restorations
- Deciduous teeth restorations
- Geriatric restorations
- Intermediate restorative and base material for Class I and II cavities using the sandwich technique
- Cervical (Class V) restorations
- Core build ups
- Temporary fillings
- Restorative in the field using the ART technique
- Dentine replacement

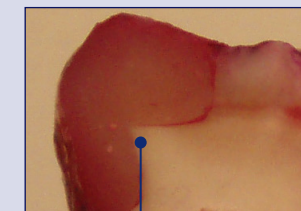
GREAT MARGINAL ADAPTATION

Riva Self Cure is the answer to long term microleakage prevention. Use it as a restorative or a base under permanent restorations. "...self-cured glass ionomer bases were more effective in reducing microleakage in both the occlusal and proximal cavo surfaces than a flowable resin." [1]

RIVA SELF CURE



FLOWABLE COMPOSITE



Red dye indicates marginal leakage

NO SHRINKAGE

Riva Self Cure does not contain resin eliminating the problem of volumetric shrinkage after curing. Sensitivity, resulting from microleakage associated with shrinkage does not occur.

BULK FILL TO SAVE TIME

Riva Self Cure can be bulk filled to minimise chair time.

CHOICE OF VISCOSITIES

Riva Self Cure easily extrudes into the cavity, but for an exceptional packable, high viscosity material, use Riva Self Cure HV. You have a choice.