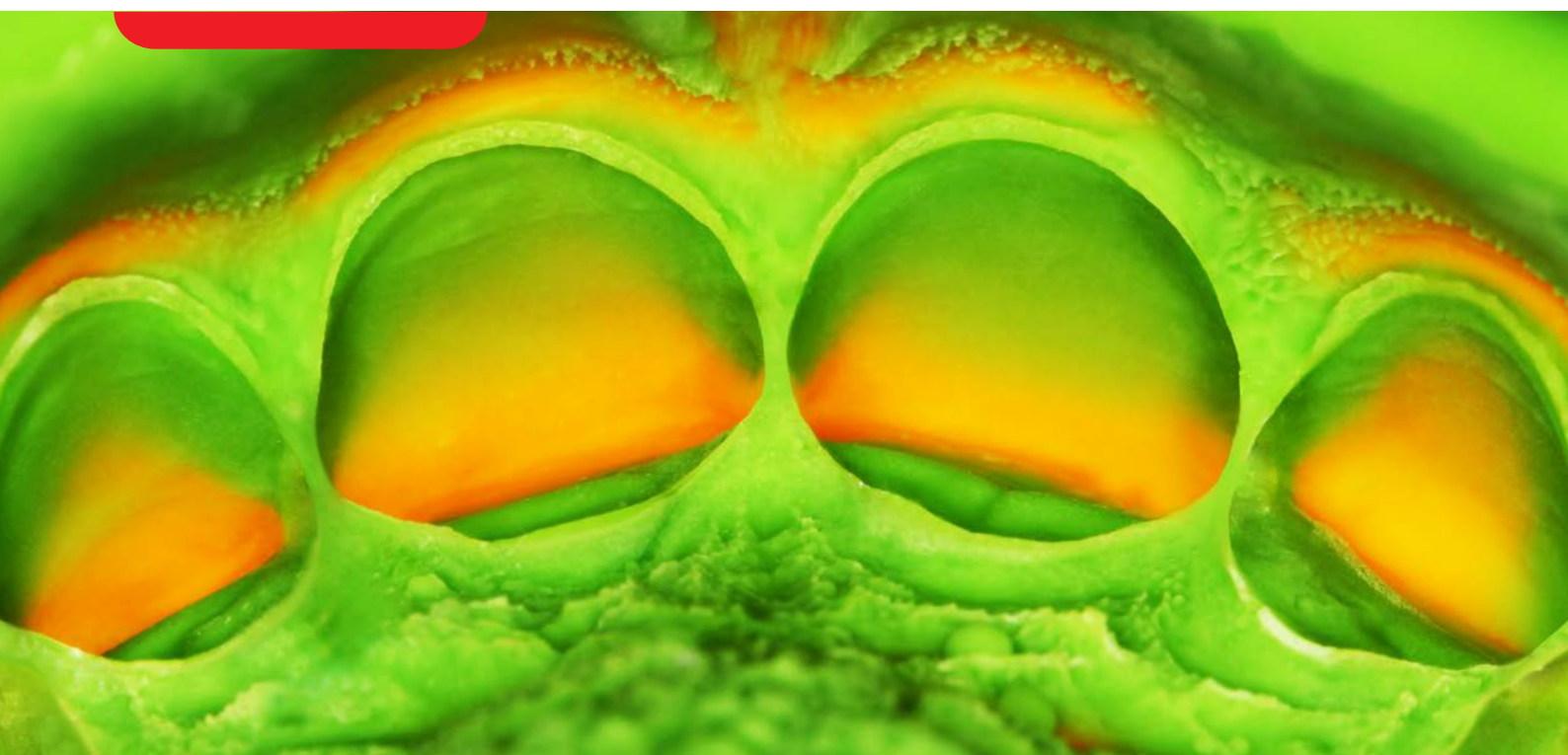



elite HD+



THE HIGH DEFINITION

A-Silicone for impression taking

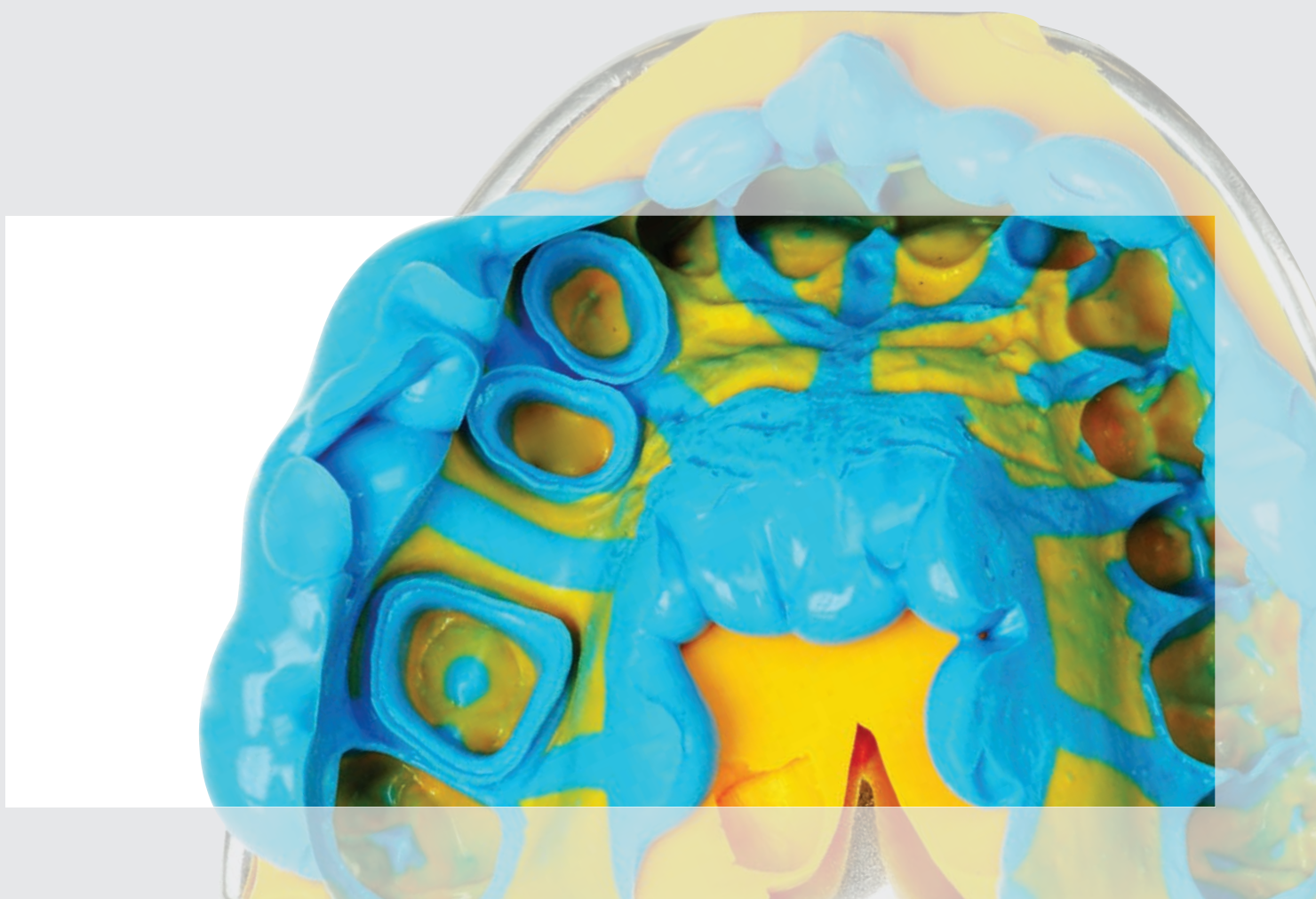
Zhermack 
Dental



Elite HD+,
the high definition

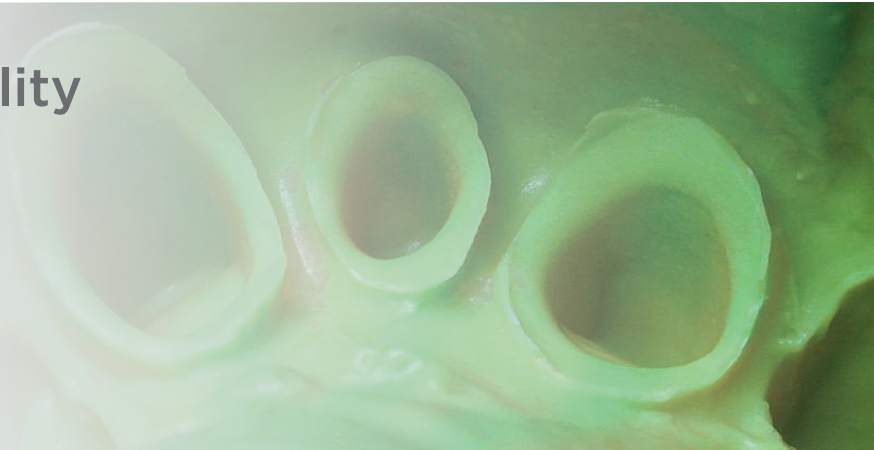
Elite HD +, the A-Silicone which offers accurate and reliable results.

Elite HD+ is an impression material that combines the effects of **nanotechnology** with **hydrocompatibility**, thus guaranteeing high performance in a variety of clinical conditions.



Features

When hydrocompatibility becomes definition.



HYDROCOMPATIBLE

- ▶ Quick **hydrocompatibility** for an optimal user experience.

FLOWABILITY

- ▶ **Nanoparticles** in the fillers improve flowability in the gingival sulcus.

DETAILED

- ▶ The **synergistic action** between immediate hydrocompatibility and nano-technology ensures a consistent reproduction of details.

VERSATILITY

- ▶ A **wide range** of viscosities and setting times suitable for different impression technique.

PRACTICAL

- ▶ The **5:1 system** for automatic mixing machines **fits straight** into the machine. It does not need a cartridge sleeve.

COMPLETE

- ▶ A range of products that satisfies **different clinical needs of the user**.

Benefits

Hydrocompatibility and nano-technology, a synergistic action.

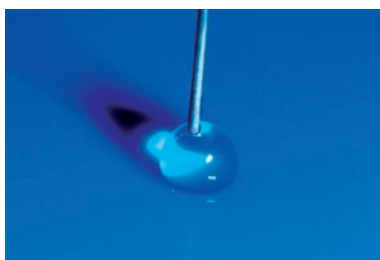
HIGH DEFINITION

Hydrocompatibility effect allows a quick identification of detail, therefore drastically reducing the risk of bubble formation.

FLOW PRESSURE

The **effect of the nanotechnology** also transpires when the material is put under pressure, absolutely during the impression taking Elite HD+ increases its fluidity to reach the less accessible areas.

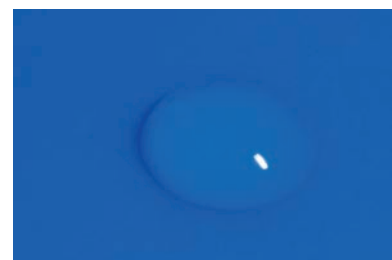
DROP TEST



A DROP AFTER 2 SECONDS



Conventional silicone



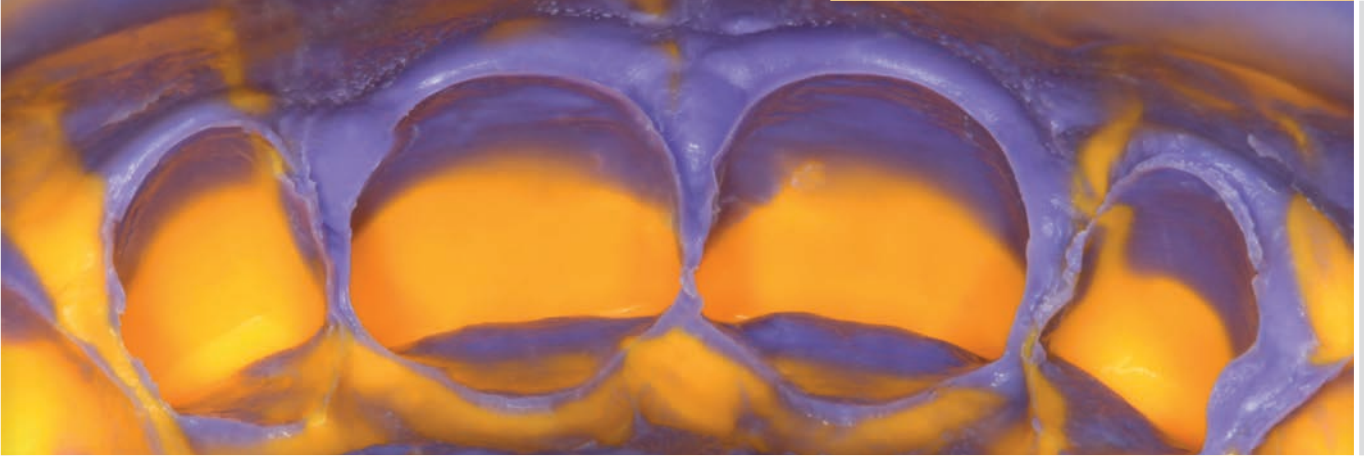
Elite HD+

Impression techniques

Suggested techniques and combinations



PRODUCT	SUGGESTED TECHNIQUE	SUGGESTED COMBINATION
Elite HD+ Putty Soft Elite HD+ Maxi Putty Soft	Double step impression	Elite HD+ Regular Body Elite HD+ Light Body Elite HD+ Super Light Body
Elite HD+ Tray Material Elite HD+ Maxi Tray Material	Single step impression	Elite HD+ Regular Body Elite HD+ Light Body
Elite HD+ Monophase Elite HD+ Maxi Monophase	Monophase impression	



HYDROCOMPATIBILITY

The **combination of nanometric charges**, pre-treated with polar tensioactives, makes **Elite HD+** quickly hydrocompatible after the application of the fluid in the gingival sulcus.

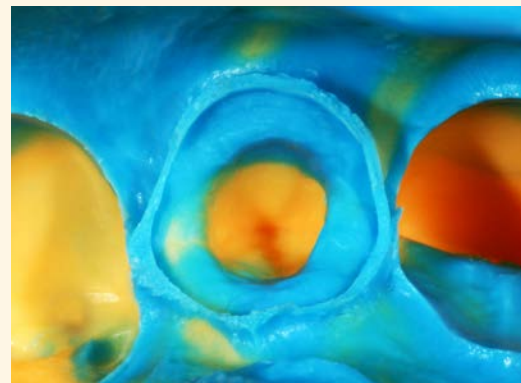
IDEAL FLOWABILITY

The **application of nano-particles** allows **Elite HD+** to reach an ideal level of flowability within the gingival sulcus.

IMPRESSION DETAILS



Regular Body Normal Setting



Light Body Normal Setting

Codes



Elite HD+ Putty Soft - Very high viscosity A-Silicone

Code	Setting time	Packaging
C203000	Normal Set	Standard Pack: 250 ml Base + 250 ml Catalyst tubs
C203010	Fast Set	
C203002	Normal Set	Eco Pack: 2 x 450 ml Base + 2 x 450 ml Catalyst tubs
C203012	Fast Set	
C203100	Normal Set	Intro Kit: 250 ml Base + 250 ml Catalyst tubs Putty Soft Normal, 1 x 50 ml Light Normal, 1 x 50 ml Regular Normal + 12 mixing tips yellow + 6 oral tips yellow + 1 Dispenser D2



NORMAL FAST

Elite HD+ Maxi Putty Soft - Very high viscosity A-Silicone

Code	Setting time	Packaging
C202340	Normal Set	Standard Pack: 2 x 380 ml cartridges (Base + Catalyst) + 15 dynamic-static mixing tips + 2 mixing tip lockers
C202360	Fast Set	
C202350	Normal Set	Eco Pack: 6 x 380 ml cartridges (Base + Catalyst) + 2 mixing tip lockers
C202370	Fast Set	



NORMAL **5:1** FAST

Elite HD+ Tray Material - High viscosity A-Silicone

Code	Setting time	Packaging
C202032	Fast Set	Standard Pack: 2 x 50 ml cartridges (Base + Catalyst) + 6 mixing tips green



Elite HD+ Maxi Tray Material - High viscosity A-Silicone

Code	Setting time	Packaging
C202320	Fast Set	Standard Pack: 2 x 380 ml cartridges (Base + Catalyst) + 15 dynamic-static mixing tips + 2 mixing tip lockers
C202330	Fast Set	Eco Pack: 6 x 380 ml cartridges (Base + Catalyst) + 2 mixing tip lockers



5:1

Elite HD+ Monophase - Medium viscosity A-Silicone

Code	Setting time	Packaging
C202020	Normal Set	Standard Pack: 2 x 50 ml cartridges (Base + Catalyst) + 12 mixing tips yellow



Elite HD+ Maxi Monophase - Medium viscosity A-Silicone



5:1

Code	Setting time	Packaging
C202300	Normal Set	Standard Pack: 2 x 380 ml cartridges (Base + Catalyst) + 15 dynamic-static mixing tips + 2 mixing tip lockers
C202310	Normal Set	Eco Pack: 6 x 380 ml cartridges (Base + Catalyst) + 2 mixing tip lockers

Elite HD+ Regular Body - Medium viscosity A-Silicone



Code	Setting time	Packaging
C203020	Normal Set	Standard Pack: 2 x 50 ml cartridges (Base + Catalyst) + 12 mixing tips yellow
C203025	Normal Set	Standard Pack: 2 x 90 ml tubes (Base + Catalyst)
C203100	Normal Set	Intro Kit: 250 ml Base + 250 ml Catalyst tubs Putty Soft Normal, 1 x 50 ml Light Normal, 1 x 50 ml Regular Normal + 12 mixing tips yellow + 6 intraoral tips + 1 Dispenser D2

Elite HD+ Light Body - Low viscosity A-Silicone



Code	Setting time	Packaging
C203030	Normal Set	Standard Pack: 2 x 50 ml cartridges (Base + Catalyst) + 12 mixing tips yellow
C203035	Normal Set	Standard Pack: 2 x 90 ml tubes (Base + Catalyst)
C203100	Normal Set	Intro Kit: 250 ml Base + 250 ml Catalyst tubs Putty Soft Normal, 1 x 50 ml Light Normal, 1 x 50 ml Regular Normal + 12 mixing tips yellow + 6 intraoral tips + 1 Dispenser D2

Elite HD+ Light Body - Low viscosity A-Silicone



Code	Setting time	Packaging
C203040	Fast Set	Standard Pack: 2 x 50 ml cartridges (Base + Catalyst) + 12 mixing tips yellow

Elite HD+ Super Light Body - Low viscosity A-Silicone



Code	Setting time	Packaging
C203050	Fast Set	Standard Pack: 2 x 50 ml cartridges (Base + Catalyst) + 12 mixing tips yellow



Equipment

Code	Model
6000-0000	Sympress – 230 V
6000-1000	Sympress – 120 V
6000-2000	Sympress 230 V plug UK
6000-3000	Sympress 100 V

For more information about Sympress, visit our website www.zhermack.com

Accessories

C202070



Yellow mixing tips (48 pcs)

C202080



Green mixing tips (48 pcs)

C202090



Yellow oral tips (48 pcs)

C700025



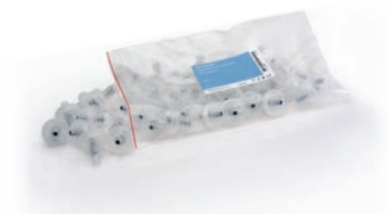
Universal Tray Adhesive - bottle 10 ml

C202100



D2 Dispenser 1:1

C205530



Dynamic-static mixing tips (50 pcs)

C205540



Mixing tip lockers (2 pcs)

D510010



Putty Cut

C207202



Mixing pad (12 sheets)

C207200



Spatula for silicones



Fulfilling your needs