

hydrorise



THE INNOVATION THAT DID NOT EXIST

Hydrocompatible A-Silicone for high precision impressions

Zhermack 
Dental

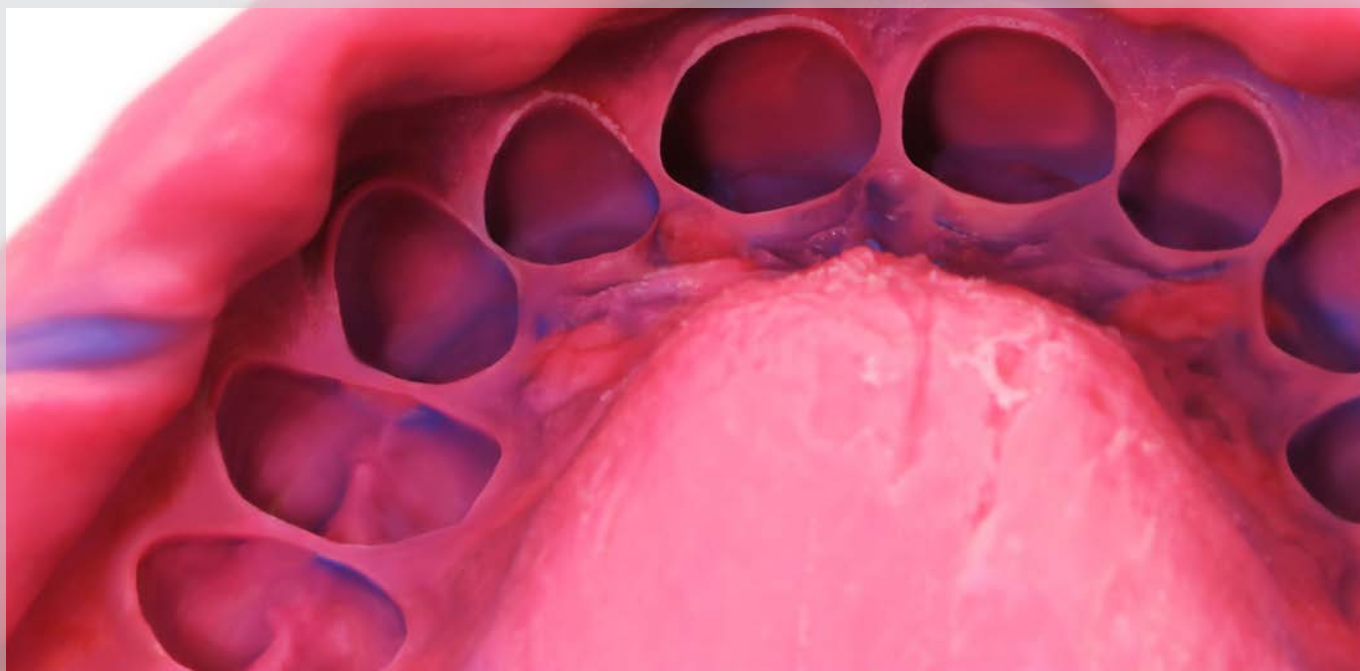
Hydrorise, the innovation that did not exist



Hydrorise is the hyper-hydrocompatible A-Silicone which adapts to different impression techniques in various clinical situations, even the most difficult.

Hydrorise permits combinations of different viscosities for each specific situation with a range of setting times for any impression procedure.

Hydrorise high performance derives from a **technology** called **"hyperhydrocompatibility"**, the ability to increase silicone flowability to **improve impression definition significantly**.



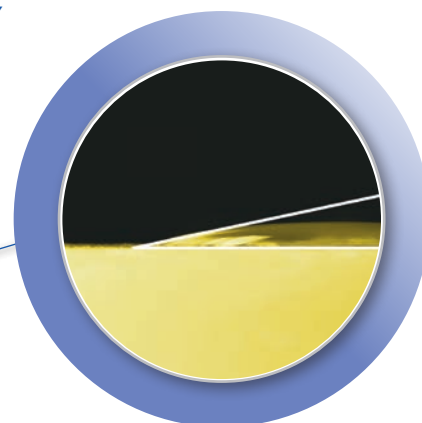
Precision

Hyperhydrocompatible technology.



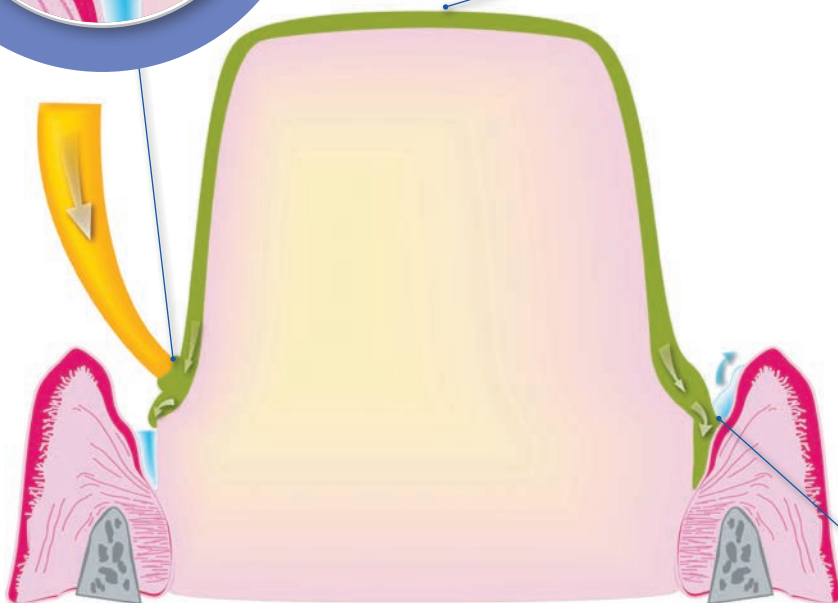
HYPERHYDROCOMPATIBILITY

- ▶ Technology exclusively developed by Zhermack research, making Hydrorise extremely affine to water.



VERY SMALL CONTACT ANGLE* (Light and Extra Light versions)

- ▶ The lower the contact angle, the higher the material wettability, thus allowing the silicone to adapt to different types of dental morphologies.



AMDA SYSTEM (ADVANCED MOISTURE DISPLACEMENT ACTION)

- ▶ It allows precise detail reproduction in the oral cavity, capturing the reproduction of less accessible areas.

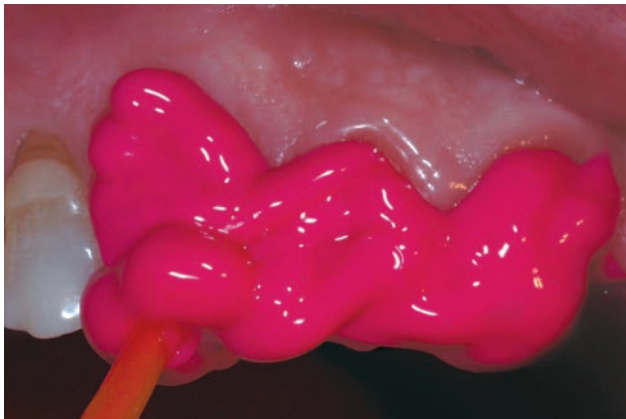
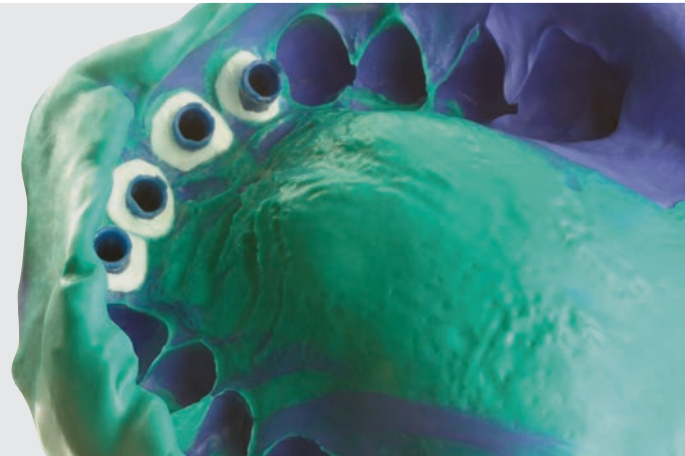


*Source: internal Zhermack data

Reliability

Reliability, for dentists and for patients.

The synergy between the Hydrorise physical and mechanical properties will contribute to your clinical success.



Thixotropy

- ▶ The ability of silicone to keep its position once extruded and to flow when subjected to pressure. In this way, Hydrorise will not slump from the preparation or into patient's throat.



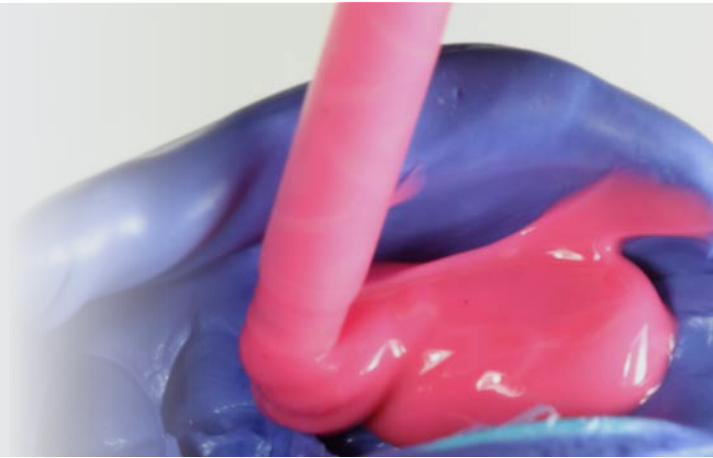
Tear strength

- ▶ Hydrorise is particularly flexible, especially with marked undercuts. The material has a high tear strength and reduces the risk of distortions.

Versatility

Personal solutions, dentists choices.

Hydrorise has been studied to combine different viscosities for different impression methods.



Viscosity	Two stage	Single stage	Monophase
Hydrorise Putty			
Hydrorise Heavy Body			
Hydrorise Monophase			
Hydrorise Regular Body			
Hydrorise Light Body			
Hydrorise Extra Light Body			

All viscosities are available in NORMAL SET (working time 2' - setting time 5'30") and FAST SET (working time 1'30" - setting time 4').

Hydrorise and Sympress: a perfect combination.

Hydrorise system can be used with Sympress, the automatic mixing machine specifically designed for a fast and easy mixing of impression materials packaged in 5:1 cartridges.

▶ Two-speed

By pressing a single button, you can select the desired speed and organize material supply according to needs.

▶ Modern design

This compact and functional line guarantees more space, with use from a workstation.

▶ Mixing quality

The perfect dosage between components ensures even, bubble-free mixing.

▶ 5:1 cartridge

Hydrorise **in maxi, 380 ml packaging**, offers a cartridge created for use together with Modulmix and **compatible with the most common 5:1 automatic mixers on the market**. Simple to assemble, ready to use.

Dynamic/static tip offers high quality mixing without over-heating material, reducing waste by 18%*.

Tip lock for quick, safe fastening.



Codes



Hydrorise Putty - Very high viscosity A-Silicone

Code	Setting time	Packaging
C207010	Normal Set	Standard Pack: 300 ml Base + 300 ml Catalyst tubs
C207011	Fast Set	
C207012	Normal Set	Eco Pack: 900 ml Base + 900 ml Catalyst tubs
C207013	Fast Set	
C207071	Fast Set	Trial Kit: 100 ml Base + 100 ml Catalyst tubs Putty Fast + 50 ml Light Fast + 6 mixing tips yellow



Hydrorise Maxi Putty - Very high viscosity A-Silicone

Code	Setting time	Packaging
C207044	Normal Set	Standard Pack: 2 x 380 ml cartridges + 15 dynamic-static mixing tips + 2 mixing tip lockers
C207045	Fast Set	
C207064	Normal Set	Eco Pack: 6 x 380 ml cartridges + 2 mixing tip lockers
C207065	Fast Set	



5:1

Hydrorise Heavy Body - High viscosity A-Silicone

Code	Setting time	Packaging
C207008	Normal Set	Standard Pack: 2 x 50 ml cartridges (Base + Catalyst) + 6 mixing tips green
C207009	Fast Set	
C207077	Fast Set	Trial Kit: 1 x 50 ml Heavy Fast + 1 x 50 ml Light Fast + 6 mixing tips yellow + 3 mixing tips green



Hydrorise Maxi Heavy Body - High viscosity A-Silicone

Code	Setting time	Packaging
C207042	Normal Set	Standard Pack: 2 x 380 ml cartridges + 15 dynamic-static mixing tips + 2 mixing tip lockers
C207043	Fast Set	
C207062	Normal Set	Eco Pack: 6 x 380 ml cartridges + 2 mixing tip lockers
C207063	Fast Set	

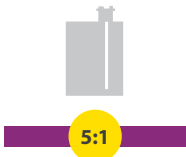


5:1



Hydrorise Monophase - Medium viscosity A-Silicone

Code	Setting time	Packaging
C207006	Normal Set	Standard Pack: 2 x 50 ml cartridges + 6 mixing tips pink
C207007	Fast Set	



Hydrorise Maxi Monophase - Medium viscosity A-Silicone

Code	Setting time	Packaging
C207040	Normal Set	Standard Pack: 2 x 380 ml cartridges + 15 dynamic-static mixing tips + 2 mixing tip lockers
C207041	Fast Set	
C207060	Normal Set	Eco Pack: 6 x 380 ml + 2 mixing tip lockers
C207061	Fast Set	



Hydrorise Regular Body - Medium viscosity A-Silicone

Code	Setting time	Packaging
C207004	Normal Set	Standard Pack: 2 x 50 ml cartridges (Base + Catalyst) + 12 mixing tips pink
C207005	Fast Set	



Hydrorise Light Body - Low viscosity A-Silicone

Code	Setting time	Packaging
C207000	Normal Set	Standard Pack: 2 x 50 ml cartridges + 12 mixing tips yellow
C207001	Fast Set	
C207071	Fast Set	Trial Kit: 100 ml Base + 100 ml Catalyst tubs Putty Fast + 50 ml Light Fast + 6 mixing tips yellow
C207077	Fast Set	Trial Kit: 1 x 50 ml Heavy Fast + 1 x 50 ml Light Fast + 6 mixing tips yellow + 3 mixing tips green



Hydrorise Extra Light Body - Very low viscosity A-Silicone

Code	Setting time	Packaging
C207002	Normal Set	Standard Pack: 2 x 50 ml cartridges + 12 mixing tips yellow
C207003	Fast Set	



Equipment

Code	Model
6000-0000	Sympress – 230 V
6000-1000	Sympress – 120 V
6000-2000	Sympress 230 V plug UK
6000-3000	Sympress 100 V

For more information about Sympress, visit our website www.zhermack.com

Accessories

C202059



Yellow mixing tips (48 pcs)

C202074



Pink mixing tips (48 pcs)

C202079



Green mixing tips (48 pcs)

D510010



Putty Cut

C202089



Yellow oral tips (48 pcs)

C700025



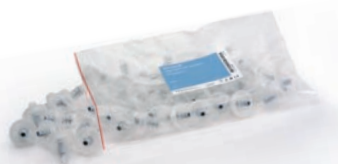
Universal Tray Adhesive - bottle 10 ml

C202100



Dispenser D2 1:1

C205530



Dynamic-static mixing tips (50 pcs)

C205540



Mixing tip lockers (2 pcs)



Fulfilling your needs