

RSV5

Radiology System Visident



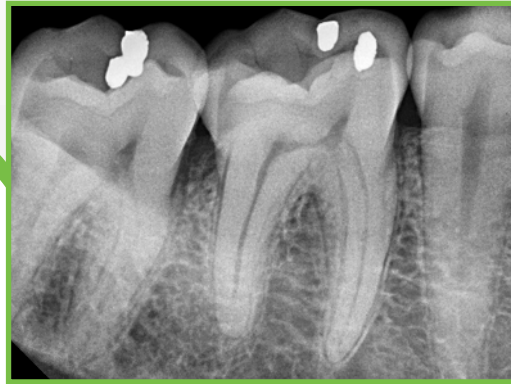
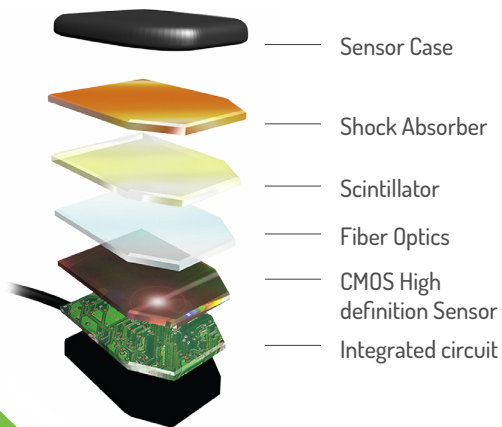
RSV5, technology at its finest



HIGH QUALITY IMAGES

SV5 sensor offers exceptional sharp and precise images. The anatomical detail level of images will allow you to make an immediate and reliable diagnosis.

CUTTING EDGE TECHNOLOGY



VISIODENT IMAGING SOFTWARE

Easy to use and powerful, VISIODENT Imaging software provides dozens of useful tools to help you to have the right diagnosis.





RELIABLE AND ROBUST

RSV5 sensor system has been reinforced. The sensor case includes a shock-absorber protecting from falls and bites and its USB connector has been re-design for strengthness. It guarantees an optimal durability through time.



USB CONNEXION : PLUG & PLAY TECHNOLOGY

RSV5 just needs be connected to your computer via its USB direct technology : It is ready to use. The sensor is easily portable and adapt to your dental-office configuration, single or multiple station.



WATERPROOF SENSOR

Completely waterproof, the RSV5 sensor can be safely cleaned with disinfectant liquids.



THOUGHTFUL DESIGN

The corners and angles of the sensor are rounded for easier placement inside the mouth and for increased patient comfort. The cable located at the top of the sensor case makes the sensor positioning easier, horizontally and vertically.

RSV5

Radiology System Visident

TECHNICAL SPECIFICATIONS

Sensor Technology	CMOS
External sensor dimensions	29.2 x 39.5 x 4.6 mm
Active area surface	24 x 33 mm
Pixels	1200 x 1650 pixels
Resolution	25 μ l/mm
Interface	USB
Cable length	2.7 m
Grey level	4096



01 49 46 58 00 - CONTACT@VISIODENT.COM - WWW.VISIODENT.COM