

Runyes® 3DS

Intraoral Scanner



Runyes Medical Instrument Co.,Ltd.

Add:No. 456, Tonghui Road, Jiangbei Investment & Pioneering Park C, Ningbo,China
Tel:+86-574-27709922 Fax:+86-574-27709923 Http://en.runyes.com E-mail:runyes@runyes.com

Perfect your clinic!



Chair-Side System

Immediate Restoration

Crown in single visit
Scan-Design-Print



Our Strength

Runyes intraoral scanner has fast and easy image capturing technology, which can provide reliable, accurate & complete data for digital dental impression. Providing patients with a comfortable and efficient treatment experience, our scanners make it easier for dentists to diagnose and communicate with patients. Runyes scanner is an open system scanner, which provides the access to the latest technology equipment available in the market. It has a range of applications which includes digital restoration, digital orthodontics, navigation template of digital implant, etc.

01 Powderless, Real color, Light and Portable

Easier to operate with net weight of 210g.
Simple and elegant with a colour combination of gray and white.
Looks trendy and very user friendly.
Support multi-angle image capture in patient's mouth.
Hand-held design makes operation more convenient.

02 Constant Temperature Protection Design

Dual heating options from internal & external heater, maintain the temperature of the scanner to prevent it from fogging.

03 Detachable Scanner Head

Easy to change scanner head.
Scanner heads are autoclavable and multiple times usable.
Long life narrow heads for easy reach to posteriors.



04 LED Light Source Without Radiation

High quality light source generates no radiation.
Real color scans.
Real imaging provided.

05 Artificial Intelligence Recognition

Effectively remove excess soft tissue data

06 Powerful accessories supports (optional)

Runyes 3DS Intraoral Scanner Mobile Cart, customized for Runyes Scanners.
Powerful configuration, combined with ergonomics, brings better control and sensory experience.



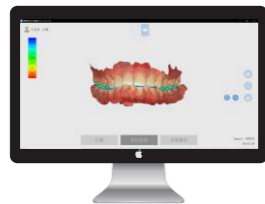
07 Faster

Quick reset to save time.
Moves smoothly while scanning or collecting data.
No need to focus from specific distance or specific angle.

08 Open data

Choose different restore-design software.
Choose output orientation, making it better to connect with design software.

Auxiliary function



OUTPUT



3SHAPE



EXO CAD

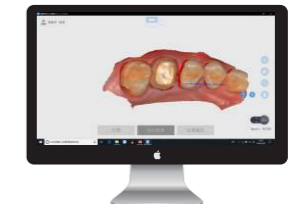
Miscellaneous Function



Occlusion Evaluation



Tips of Filling



Undercut Examination

Runyes® 3DS Powderless | Real Color Scanning | Model: IOS-11

Accuracy	20um	Export File	STL,PLY,OBJ
Scanning Distance	0-17mm	Scanner Size	240x49.5x30.5mm
Scanner Weight	210g	Operating Time	>30000hrs
Image Capture Technology	Optical continuous video collection	Imaging Mode	Synchronous 3D video
		Quick Reset	yes
		Model Optimization	yes

Recommend Computer Specification

Microsoft Windows 10, 64bit home edition or higher

CPU Laptop	Intel Core i7-8700 or higher i7-7700 or higher	System	WINDOWS 10 Home edition/ Professional edition/Corporate edition
Graphics Card	NVIDIA GeForce1060 6g or higher	Monitor Resolution	1920x1080
Memory	More than 16G	Por	USB/3.0
Hard Disk	More than 256G SSD or 128G+1T mechanical hard disk	Supply Voltage	110V~240V,50Hz
		Power Consumption	25VA

Digital Solution



Doctors' Benefits

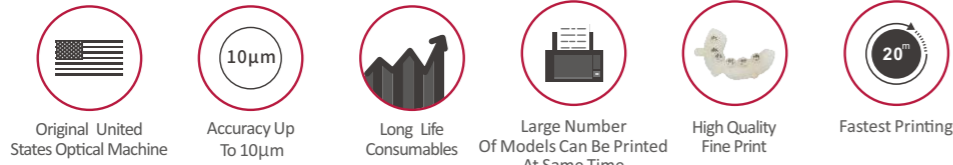
- High quality restoration effect.
- Accurate digital moulage.
- Real-time scanning.
- Crown in single day.
- Perfect fitting of crown.
- Take moulage easily.
- Powderless scanning.
- No need of moulage material.
- Reduced manual errors.
- Higher efficiency.
- Speed up making moulage, reduce operation time.
- Save material and logistic cost.

Patients' Benefits

- More comfortable experience.
- Powderless scanning, prevent discomfort.
- No gagging to patient.
- Higher degree of satisfaction.
- No repeated impressions.



3D Printer With DLP Technology



Runyes 3D Printer chairside production	
Printing 3D Technon	DLP 3D Printer
Screen	5 inch Colorful IPS Touch Screen
Build Volume	89.6x56x95mm
Slice Thickness	25-50 microns
XY Resolution	50um
Positional Accuracy	1280x720 Pixel
Material Type	Photosensitive Resin
Print Speed	30mm/h
Supported Formats	.STL/.OBJ/.3DS/.AMF
System	WIN XP/Vista/7/8/10
Machine Size	32x30x58.5cm
Weight	G.W. 25KG N.W. 20KG
Power Supply	AC 220V/ 50HZ
Power	65W
Data Transmission	USB, USB Flash Disk

Advance Features

- Using the original United States optical machine with the accuracy of 50µm.
- Using precision modules, accuracy of 10µm, with more stable building platform.
- Use tilting stripping to increase the life of the resin tank.
- Two resin tanks for different materials.
- Convenient to level printing base plane and remove the model.
- Print a tooth model of size 18X32X56mm within 20min.
- Intelligent offline printing, no need of special computer with directly transmitted by WLAN or USB.
- Compact & Stylish.

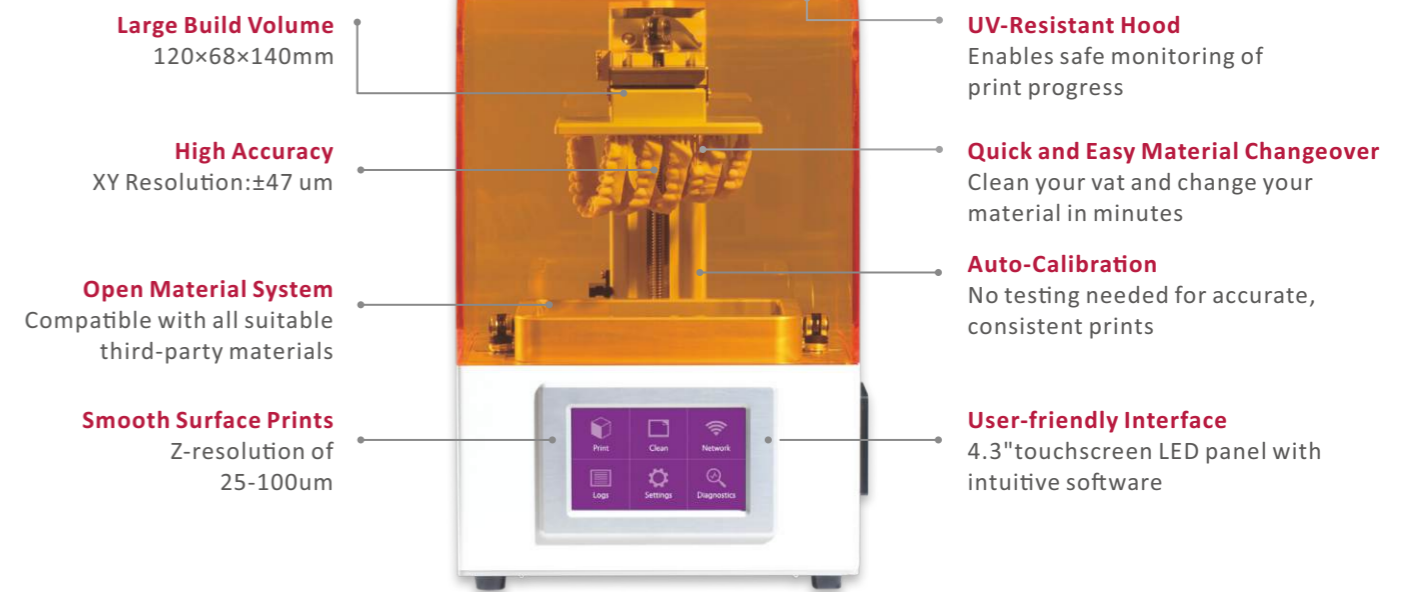


Ackuretta LCD Printer Free Shape 120

A chair-side solution for dental professionals, the FreeShape 120 offers smooth surface, high-resolution prints at an affordable price.

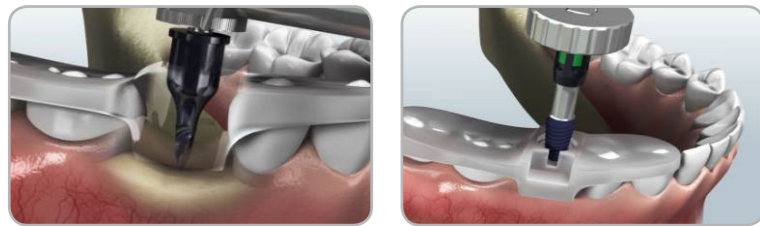


FreeShape 120 Chairside Production	
3D Printing Technon	LCD
Machine Size	25x21x32cm
Weight	9kg
Build Volume	120x68x140mm
XY Resolution	47um
Slice Thickness	25-100 microns
Resin Wavelength	405nm
Software	Alpha 3D and Omega 3D
Power Supply	AC110-230V/50-60Hz



R1 Implant Guide System

R1 Simple Guide Surgery Kit with variable lengths & diameter makes all operations from drilling to implant placement come true on guided template, and makes you enjoy the whole implant operation.



No guide ring navigation & extra drills required, our system can drill to the last bur.



- Minimally invasive operation, relieve patient's pain**
 - No need for flap opening during surgery
 - Reduce pain and swelling associated with gingiva incision, taking less time for healing.

- Very accurate and safe**
 - Accurately diagnose the most suitable implant location according to CT and Intraoral scanning data.
 - Improve the rate of success.

- Implant concept: Restore-guide**
 - Runyes chair-side System provides the feature of complete planning in advance, achieving accurate positioning and guidance during surgery. It is easier to operate and control, presenting desired & accurate implant position and direction.

Universal Compatibility

The R1 Guided Surgery Kit has been designed in such a way that it will work with all implant systems.

ASTRA TECH **Nobel Biocare**
OSSTEM **ZIMMER**
BIOMET 3i **Straumann**
DIO **MEGA GEN**
 真心创造美真 美格真
DENTIUM



Dental Digital Practising Center (DDP Center)

Runyes CAD/CAM Center started to be under construction from 2017 and completed in Oct, 2018. The Digital center adheres to the idea of "3D Intraoral scanning and 3D printing", focuses on traditional restore technique, improves and processes all kinds of products concerning implant restoration, digital guide plate, inlay, partial denture fixation and restoration, complete removable denture restoration.etc. It provides customers with technique support and training service.



Jiangbei Dental Hospital

Ningbo Jiangbei Dental Hospital is the only specialized dental hospital in China who sets clinical stomatology and oral education training as a unit.

Relying on Ningbo international dental industrial park, the hospital obtain the resource sharing and technical support in equipment, instruments and materials used for oral diagnosis, treatment and disinfection.



Ningbo Jiangbei Dental Hospital united <Fashion Dentist> commercial college, trains about 3000 dentists every year through online and offline training.



The simulator room is equipped with emulational head-form, which can realize simulative oral practical teaching.